

## Doppelsteg-Breitband-Hornantenne Double Ridge Waveguide Horn Antenna



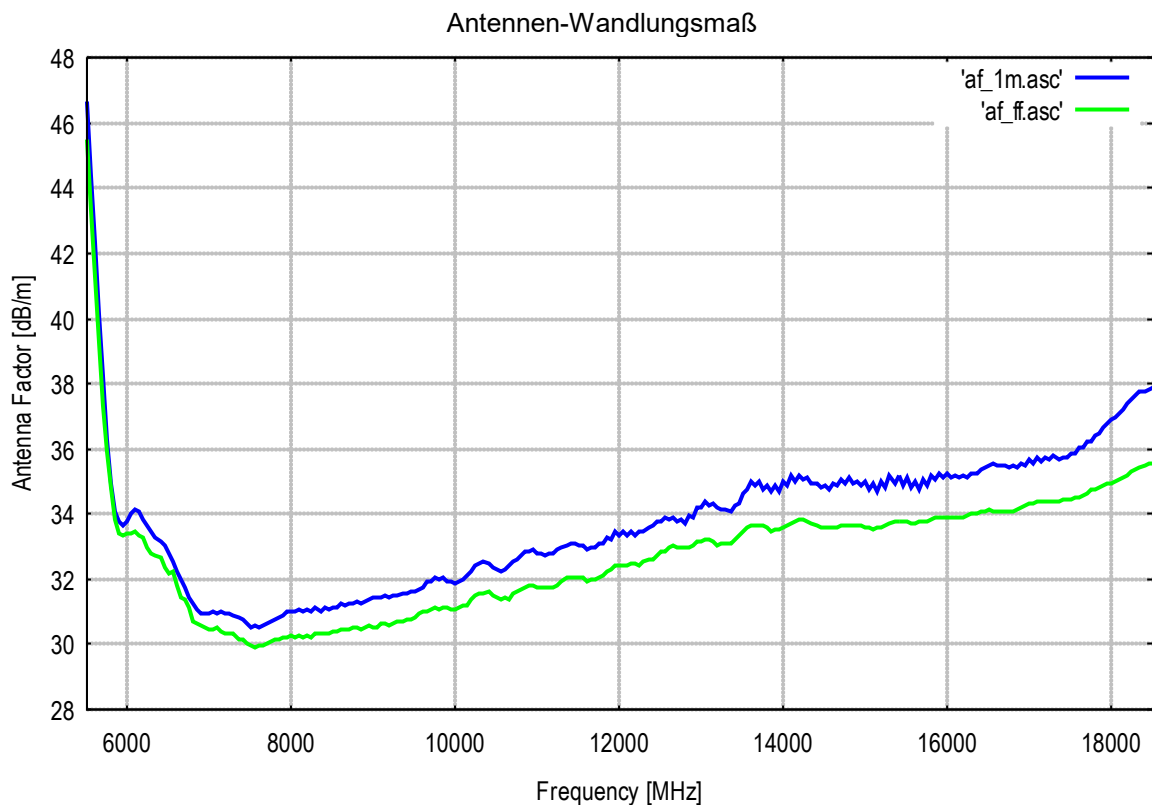
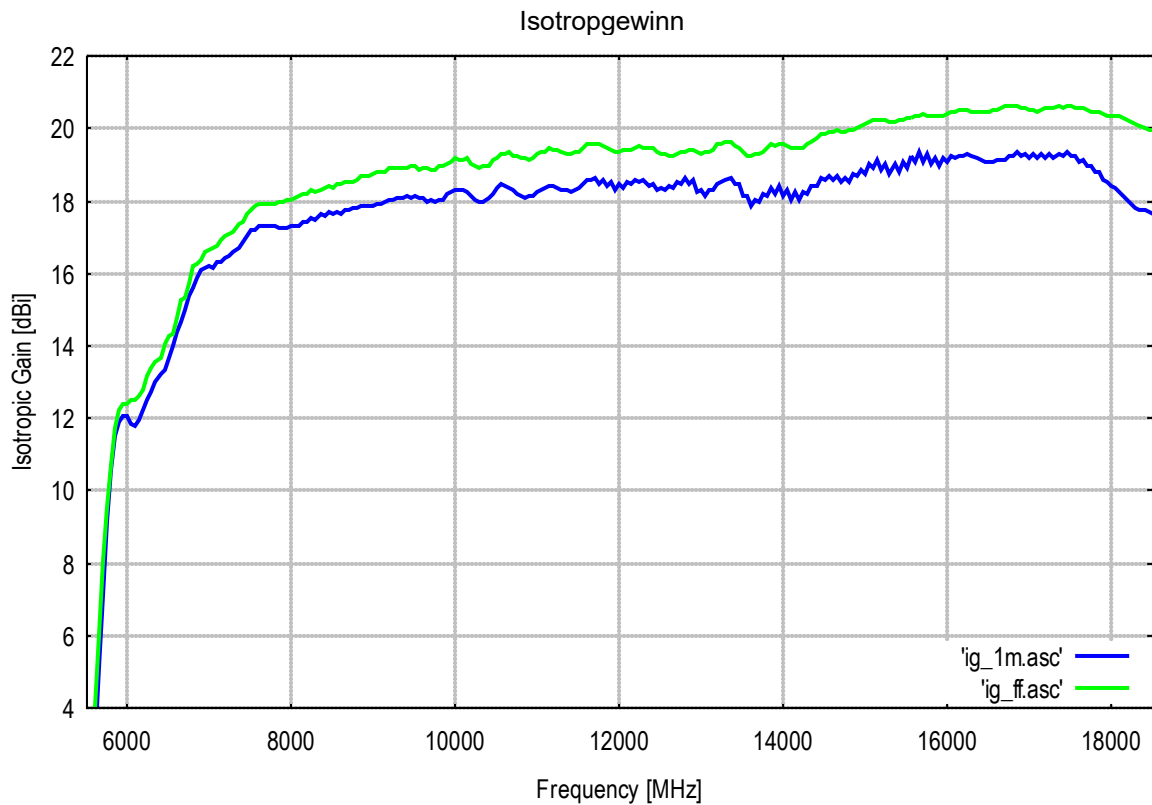
### Beschreibung:

Linear polarisierte Doppelsteg Breitband Hornantenne in Aluminiumausführung für Empfangs- und Sendeanwendungen für Hohlleiter-Flanschmontage.

### Description:

Linear polarized double ridged broadband horn antenna for receive and transmit applications made of aluminium with waveguide flange.

Technische Daten:		Specifications:	
Nomineller Frequenzbereich:	6.5 ... 18 GHz	Nominal Frequency Range:	
Nutzbarer Frequenzbereich:	5.8...18.5 GHz		
Nominelle Impedanz:	50 Ω	Nominal Impedance:	
Isotropiegewinn:	14...20 dBi	Isotropic Gain:	
Antennenfaktor:	30...37 dB/m	Antenna Factor:	
VSWR typ.:	< 1.5	VSWR typical:	
VSWR max.:	< 2 (7.5 – 18 GHz)	SWR max.:	
Vor- Rückverhältnis:	typ. > 25 dB	Front to Back Ratio:	
Polarisationsentkopplung:	typ. > 30 dB	Cross Polarisation:	
3 dB Öffnungswinkel typ.(E-Ebene):	14°	3 dB Beamwidth typ. (E-Plane):	
3 dB Öffnungswinkel typ.(H-Ebene):	14°	3 dB Beamwidth typ. (H-Plane):	
6 dB Öffnungswinkel typ.(E-Ebene):	22°	6 dB Beamwidth typ. (E-Plane):	
6 dB Öffnungswinkel typ.(H-Ebene):	22°	6 dB Beamwidth typ. (H-Plane):	
Max. Eingangsleistung:	1 kW	Max. Input Power:	
Anschlußart: Hohlleiter-Flansch:	WRD650D28	Connector: Waveguide flange:	
Option Halterung:	22 mm	Optional Mount:	
Option: Adapter N-Buchse auf Hohlleiterflansch WRD650		Option: Adapter N-female to waveguide WRD 650	
Breite x Länge x Dicke:	145 x 282 x 117	Width x Length x Thickness:	
Gewicht:	0.41 kg	Weight:	



Frequency	Isotropic gain 1 m Aperturre	Antenna factor 1 m Aperturre	Isotropic gain Farfield	Antenna factor Farfield
MHz	dBi	dB/m	dBi	dB/m
5000.00	-17.94	62.14	-16.44	60.64
5050.00	-16.88	61.17	-15.51	59.80
5100.00	-15.35	59.72	-14.50	58.87
5150.00	-13.61	58.07	-12.86	57.32
5200.00	-12.07	56.61	-11.40	55.94
5250.00	-10.37	54.99	-9.79	54.41
5300.00	-9.02	53.73	-8.04	52.75
5350.00	-7.24	52.03	-6.47	51.26
5400.00	-5.54	50.41	-4.61	49.48
5450.00	-3.52	48.47	-2.51	47.46
5500.00	-1.64	46.67	-0.48	45.51
5550.00	0.72	44.39	1.75	43.36
5600.00	2.85	42.33	3.86	41.32
5650.00	5.08	40.18	5.97	39.29
5700.00	7.10	38.24	8.02	37.32
5750.00	9.14	36.27	9.50	35.91
5800.00	10.57	34.92	10.66	34.83
5850.00	11.49	34.07	11.71	33.85
5900.00	11.89	33.75	12.21	33.43
5950.00	12.09	33.62	12.39	33.32
6000.00	12.04	33.74	12.40	33.38
6050.00	11.86	34.00	12.48	33.38
6100.00	11.81	34.12	12.49	33.44
6150.00	11.93	34.07	12.63	33.37
6200.00	12.23	33.84	12.80	33.27
6250.00	12.51	33.63	13.15	32.99
6300.00	12.73	33.48	13.39	32.82
6350.00	13.01	33.27	13.58	32.70
6400.00	13.20	33.14	13.67	32.67
6450.00	13.36	33.05	14.06	32.35
6500.00	13.69	32.79	14.28	32.20
6550.00	14.01	32.53	14.33	32.21
6600.00	14.36	32.25	14.80	31.81
6650.00	14.68	32.00	15.25	31.43
6700.00	15.00	31.74	15.35	31.39
6750.00	15.37	31.44	15.69	31.12
6800.00	15.60	31.27	16.20	30.67
6850.00	15.88	31.05	16.28	30.65
6900.00	16.08	30.92	16.40	30.60
6950.00	16.14	30.92	16.57	30.49
7000.00	16.19	30.93	16.67	30.45
7050.00	16.17	31.01	16.72	30.46
7100.00	16.30	30.95	16.76	30.49
7150.00	16.30	31.01	16.93	30.38
7200.00	16.44	30.93	17.03	30.34
7250.00	16.50	30.93	17.10	30.33
7300.00	16.60	30.89	17.17	30.32
7350.00	16.71	30.84	17.37	30.18
7400.00	16.87	30.73	17.44	30.16
7450.00	17.03	30.63	17.64	30.02
7500.00	17.21	30.51	17.77	29.95

Frequency	Isotropic gain 1 m Aperturre	Antenna factor 1 m Aperturre	Isotropic gain Farfield	Antenna factor Farfield
MHz	dBi	dB/m	dBi	dB/m
7550.00	17.23	30.55	17.89	29.89
7600.00	17.34	30.50	17.90	29.94
7650.00	17.29	30.60	17.93	29.96
7700.00	17.31	30.64	17.90	30.05
7750.00	17.29	30.72	17.92	30.09
7800.00	17.29	30.77	17.94	30.12
7850.00	17.27	30.85	17.97	30.15
7900.00	17.28	30.89	17.98	30.19
7950.00	17.25	30.98	18.01	30.22
8000.00	17.29	30.99	18.02	30.26
8050.00	17.31	31.03	18.11	30.23
8100.00	17.34	31.05	18.12	30.27
8150.00	17.45	30.99	18.21	30.23
8200.00	17.42	31.08	18.22	30.28
8250.00	17.54	31.01	18.32	30.23
8300.00	17.48	31.12	18.27	30.33
8350.00	17.63	31.02	18.33	30.32
8400.00	17.59	31.12	18.36	30.35
8450.00	17.70	31.06	18.41	30.35
8500.00	17.65	31.16	18.39	30.42
8550.00	17.72	31.14	18.47	30.39
8600.00	17.67	31.24	18.47	30.44
8650.00	17.76	31.20	18.53	30.43
8700.00	17.75	31.26	18.54	30.47
8750.00	17.82	31.24	18.52	30.54
8800.00	17.81	31.30	18.57	30.54
8850.00	17.88	31.28	18.69	30.47
8900.00	17.89	31.32	18.69	30.52
8950.00	17.89	31.37	18.68	30.58
9000.00	17.87	31.43	18.76	30.54
9050.00	17.92	31.43	18.83	30.52
9100.00	17.95	31.45	18.78	30.62
9150.00	17.97	31.48	18.79	30.66
9200.00	18.04	31.46	18.89	30.61
9250.00	18.04	31.50	18.90	30.64
9300.00	18.09	31.50	18.90	30.69
9350.00	18.08	31.56	18.93	30.71
9400.00	18.12	31.56	18.92	30.76
9450.00	18.10	31.63	18.96	30.77
9500.00	18.15	31.62	18.95	30.82
9550.00	18.11	31.71	18.87	30.95
9600.00	18.11	31.76	18.89	30.98
9650.00	17.99	31.92	18.91	31.00
9700.00	18.03	31.93	18.86	31.10
9750.00	17.97	32.03	18.86	31.14
9800.00	18.06	31.98	18.97	31.07
9850.00	18.06	32.03	18.99	31.10
9900.00	18.20	31.93	19.00	31.13
9950.00	18.26	31.92	19.10	31.08
10000.00	18.33	31.89	19.18	31.04
10050.00	18.32	31.94	19.14	31.12
10100.00	18.31	32.00	19.12	31.19



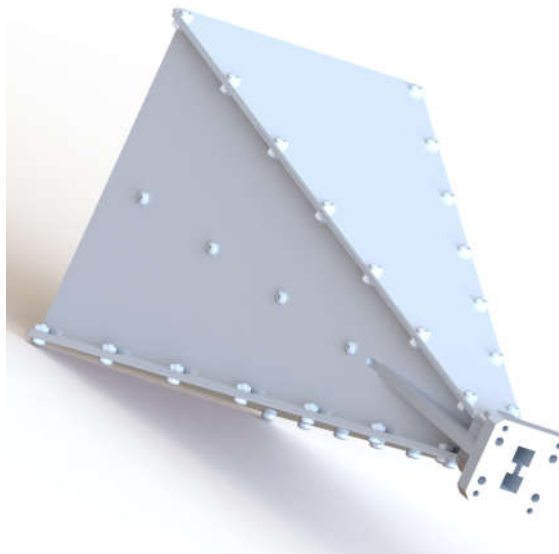
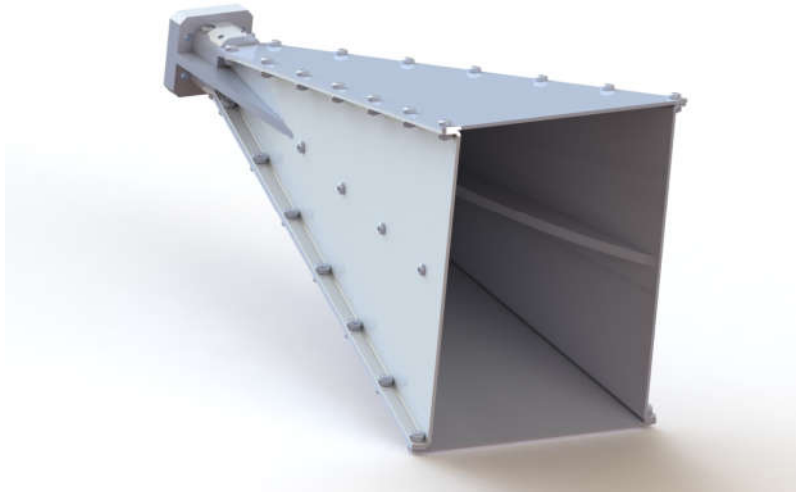
Frequency	Isotropic gain 1 m Aperturre	Antenna factor 1 m Aperturre	Isotropic gain Farfield	Antenna factor Farfield
MHz	dBi	dB/m	dBi	dB/m
10150.00	18.24	32.11	19.17	31.18
10200.00	18.17	32.22	19.04	31.35
10250.00	18.03	32.40	18.95	31.48
10300.00	17.98	32.50	18.93	31.55
10350.00	17.99	32.53	18.98	31.54
10400.00	18.08	32.48	18.96	31.60
10450.00	18.22	32.38	19.13	31.47
10500.00	18.34	32.30	19.22	31.42
10550.00	18.45	32.24	19.31	31.38
10600.00	18.40	32.33	19.32	31.41
10650.00	18.36	32.41	19.37	31.40
10700.00	18.29	32.52	19.27	31.54
10750.00	18.22	32.63	19.25	31.60
10800.00	18.16	32.73	19.18	31.71
10850.00	18.10	32.83	19.19	31.74
10900.00	18.12	32.85	19.15	31.82
10950.00	18.12	32.89	19.21	31.80
11000.00	18.24	32.81	19.30	31.75
11050.00	18.30	32.79	19.37	31.72
11100.00	18.38	32.75	19.38	31.75
11150.00	18.41	32.76	19.45	31.72
11200.00	18.40	32.80	19.44	31.76
11250.00	18.36	32.88	19.42	31.82
11300.00	18.30	32.98	19.35	31.93
11350.00	18.29	33.03	19.29	32.03
11400.00	18.27	33.09	19.31	32.05
11450.00	18.31	33.09	19.37	32.03
11500.00	18.38	33.05	19.37	32.06
11550.00	18.46	33.01	19.45	32.02
11600.00	18.58	32.93	19.57	31.94
11650.00	18.57	32.98	19.56	31.99
11700.00	18.62	32.96	19.58	32.00
11750.00	18.50	33.12	19.56	32.06
11800.00	18.56	33.10	19.52	32.14
11850.00	18.42	33.27	19.47	32.22
11900.00	18.53	33.20	19.43	32.30
11950.00	18.33	33.44	19.38	32.39
12000.00	18.48	33.32	19.37	32.43
12050.00	18.36	33.48	19.42	32.42
12100.00	18.54	33.34	19.43	32.45
12150.00	18.47	33.44	19.41	32.50
12200.00	18.60	33.35	19.48	32.47
12250.00	18.52	33.46	19.54	32.44
12300.00	18.56	33.46	19.46	32.56
12350.00	18.44	33.61	19.45	32.60
12400.00	18.45	33.64	19.47	32.62
12450.00	18.33	33.79	19.38	32.74
12500.00	18.39	33.77	19.33	32.83
12550.00	18.31	33.88	19.33	32.86
12600.00	18.42	33.81	19.27	32.96
12650.00	18.38	33.88	19.26	33.00
12700.00	18.54	33.76	19.30	33.00

Frequency	Isotropic gain 1 m Aperturre	Antenna factor 1 m Aperturre	Isotropic gain Farfield	Antenna factor Farfield
MHz	dBi	dB/m	dBi	dB/m
12750.00	18.49	33.84	19.34	32.99
12800.00	18.65	33.71	19.37	32.99
12850.00	18.45	33.95	19.42	32.98
12900.00	18.56	33.87	19.40	33.03
12950.00	18.26	34.21	19.34	33.13
13000.00	18.33	34.17	19.33	33.17
13050.00	18.13	34.40	19.34	33.19
13100.00	18.30	34.27	19.36	33.21
13150.00	18.30	34.30	19.44	33.16
13200.00	18.45	34.18	19.58	33.05
13250.00	18.54	34.12	19.59	33.07
13300.00	18.59	34.11	19.62	33.08
13350.00	18.66	34.07	19.61	33.12
13400.00	18.49	34.27	19.52	33.24
13450.00	18.46	34.33	19.45	33.34
13500.00	18.17	34.66	19.38	33.45
13550.00	18.13	34.73	19.27	33.59
13600.00	17.89	35.00	19.23	33.66
13650.00	18.05	34.87	19.28	33.64
13700.00	17.96	34.99	19.28	33.67
13750.00	18.22	34.77	19.34	33.65
13800.00	18.12	34.90	19.46	33.56
13850.00	18.37	34.68	19.56	33.49
13900.00	18.21	34.87	19.55	33.53
13950.00	18.43	34.68	19.56	33.55
14000.00	18.17	34.97	19.58	33.56
14050.00	18.32	34.85	19.54	33.63
14100.00	18.03	35.17	19.47	33.73
14150.00	18.23	35.01	19.46	33.78
14200.00	18.06	35.21	19.46	33.81
14250.00	18.26	35.04	19.49	33.81
14300.00	18.20	35.13	19.56	33.77
14350.00	18.41	34.95	19.65	33.71
14400.00	18.43	34.96	19.72	33.67
14450.00	18.62	34.80	19.83	33.59
14500.00	18.57	34.88	19.88	33.57
14550.00	18.71	34.77	19.91	33.57
14600.00	18.59	34.92	19.93	33.58
14650.00	18.69	34.85	19.96	33.58
14700.00	18.51	35.06	19.92	33.65
14750.00	18.63	34.97	19.93	33.67
14800.00	18.53	35.10	19.97	33.66
14850.00	18.74	34.91	19.99	33.66
14900.00	18.67	35.01	20.02	33.66
14950.00	18.86	34.85	20.09	33.62
15000.00	18.77	34.97	20.16	33.58
15050.00	19.02	34.75	20.19	33.58
15100.00	18.89	34.91	20.25	33.55
15150.00	19.12	34.71	20.26	33.57
15200.00	18.84	35.02	20.25	33.61
15250.00	19.05	34.84	20.23	33.66
15300.00	18.75	35.16	20.19	33.72



Frequency	Isotropic gain 1 m Aperturre	Antenna factor 1 m Aperturre	Isotropic gain Farfield	Antenna factor Farfield
MHz	dBi	dB/m	dBi	dB/m
15350.00	19.01	34.93	20.20	33.74
15400.00	18.79	35.18	20.23	33.74
15450.00	19.10	34.90	20.25	33.75
15500.00	18.93	35.10	20.28	33.75
15550.00	19.26	34.79	20.32	33.73
15600.00	19.09	34.99	20.35	33.73
15650.00	19.35	34.76	20.37	33.74
15700.00	19.10	35.04	20.40	33.74
15750.00	19.30	34.87	20.38	33.79
15800.00	19.03	35.16	20.35	33.84
15850.00	19.19	35.03	20.35	33.87
15900.00	18.98	35.27	20.33	33.92
15950.00	19.18	35.10	20.36	33.92
16000.00	19.07	35.23	20.41	33.89
16050.00	19.24	35.09	20.45	33.88
16100.00	19.17	35.19	20.47	33.89
16150.00	19.26	35.12	20.51	33.87
16200.00	19.26	35.15	20.51	33.90
16250.00	19.29	35.15	20.50	33.94
16300.00	19.25	35.21	20.48	33.98
16350.00	19.22	35.27	20.47	34.02
16400.00	19.16	35.36	20.44	34.08
16450.00	19.10	35.44	20.44	34.10
16500.00	19.08	35.49	20.45	34.12
16550.00	19.07	35.53	20.50	34.10
16600.00	19.12	35.50	20.53	34.09
16650.00	19.16	35.49	20.57	34.08
16700.00	19.16	35.51	20.62	34.05
16750.00	19.25	35.45	20.65	34.05
16800.00	19.24	35.49	20.64	34.09
16850.00	19.34	35.41	20.64	34.11
16900.00	19.23	35.55	20.60	34.18
16950.00	19.30	35.50	20.56	34.24
17000.00	19.18	35.65	20.53	34.30
17050.00	19.29	35.56	20.51	34.34
17100.00	19.17	35.71	20.49	34.39
17150.00	19.29	35.62	20.53	34.38
17200.00	19.18	35.75	20.55	34.38
17250.00	19.30	35.66	20.57	34.39
17300.00	19.20	35.78	20.60	34.38
17350.00	19.32	35.69	20.61	34.40
17400.00	19.27	35.76	20.60	34.43
17450.00	19.34	35.72	20.63	34.43
17500.00	19.23	35.85	20.63	34.45
17550.00	19.23	35.88	20.59	34.52
17600.00	19.09	36.04	20.60	34.53
17650.00	19.13	36.02	20.59	34.56
17700.00	18.97	36.21	20.53	34.65
17750.00	18.98	36.22	20.48	34.72
17800.00	18.79	36.44	20.49	34.74
17850.00	18.78	36.47	20.44	34.81
17900.00	18.60	36.68	20.40	34.88

Frequency	Isotropic gain 1 m Aperturre	Antenna factor 1 m Aperturre	Isotropic gain Farfield	Antenna factor Farfield
MHz	dBi	dB/m	dBi	dB/m
17950.00	18.54	36.76	20.38	34.92
18000.00	18.40	36.93	20.38	34.95
18050.00	18.36	36.99	20.35	35.00
18100.00	18.26	37.11	20.33	35.04
18150.00	18.17	37.23	20.29	35.11
18200.00	18.06	37.36	20.23	35.19
18250.00	17.93	37.52	20.17	35.28
18300.00	17.82	37.65	20.13	35.34
18350.00	17.76	37.73	20.07	35.42
18400.00	17.73	37.79	20.01	35.51
18450.00	17.69	37.85	19.99	35.55
18500.00	17.66	37.90	19.99	35.57





Individual SWR-Plot HWRD 650

