

ADS series

High Power DC Power Supply

Preen®



Distributed by: Reliant EMC LLC, 3311 Lewis Ave, Signal Hill CA 90755, 408-916-5750, www.reliantemc.com

AC + DC
Power Solutions

ADS series

High Power DC Power Supply

50A ~ 4500A



Trailer Type

- Output voltage of $28V \pm 10\%$ or $270V \pm 10\%$ for aerospace or military usage.
- Output current ranges from 50A to 1500A with maximum overload to 4500A.
- Capable to sustain abusive loads with inrush current and reverse current, such as aircraft engine or generators.
- Constant voltage and current limitation functions.
- Comprehensive protection includes over voltage, over current, over load, input under voltage and over temperature.
- Compliant with MIL-STD-704.

Interfaces

RS-232

RS-485

GPIB

● Option

Applications

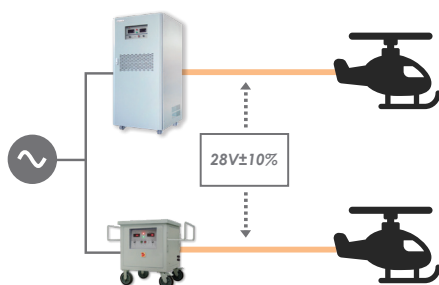
- Aerospace & Defense
- Aircraft
- Helicopter
- Aircraft Factory
- Hangar
- Repair Stations
- Transportation
- Industrial Power Supply

ADS Series

The ADS Series is a high power DC power supply with robust circuit design and high stability. It is suitable for inductive type loads and aerospace or military applications, such as motor equipment, production testing, maintenance & repair, generators, aircraft engines, laboratories and etc.

ADS series has overload capability up to 300% and users can select between two output voltage: $28V \pm 10\%$ or $270V \pm 10\%$. Its output power is up to 180kW and can deliver up to 1500A. There are two models of ADS series, trailer and stand-alone.

Ground Power Unit for Aircraft



ADS provides stable DC power and has 300% overload capability, which is an ideal ground power solution for the aircraft production and maintenance related industries.

Overload Capability



The ADS Series has robust circuit design and high stability. It is suitable for start up, repair and the production line of the inductive type loads, such as aircraft engine and compressor.

Highly Reliable

The ADS series is a SCR type of DC power supply. Utilizing industrial frequency transformer and advanced 6-pulse or 12-pulse rectifier topology, the ADS series offer clean and reliable DC power with full protections including OVP, OCP, OTP and short circuit protection. It is a DC power supply with features of high output power output, easy maintenance, high reliability and robust.

ORDERING INFORMATION :

ADS Series (1.5kW - 45kW)

Model Number	Description
ADS-28-50	High Power DC Power Supply(1.5kW/28V/50A)
ADS-28-100	High Power DC Power Supply(3kW/28V/100A)
ADS-28-200	High Power DC Power Supply(6kW/28V/200A)
ADS-28-300	High Power DC Power Supply(9kW/28V/300A)
ADS-28-400	High Power DC Power Supply(12kW/28V/400A)
ADS-28-500	High Power DC Power Supply(15kW/28V/500A)
ADS-28-600	High Power DC Power Supply(18kW/28V/600A)
ADS-28-800	High Power DC Power Supply(24kW/28V/800A)
ADS-28-1000	High Power DC Power Supply(30kW/28V/1000A)
ADS-28-1500	High Power DC Power Supply(45kW/28V/1500A)
ADS-001	300% Overload
ADS-002	RS-232 Interface
ADS-003	RS-485 Interface
ADS-004	GPIO Interface
ADS-005	Dry Contact Control

SPECIFICATIONS

ADS Series (1.5kW - 12kW)

Model	ADS-28-50		ADS-28-100		ADS-28-200		ADS-28-300		ADS-28-400		
Capacity	1.5kVA	4.5kVA	3kVA	9kVA	6kVA	18kVA	9kVA	27kVA	12kVA	36kVA	
Circuit Type	SCR										
INPUT											
Phase	3 Phase 3W+G (△) 3 Phase 4W+G (Y)										
Voltage	220V/380V ^{*1}										
Voltage Range	±10%										
Frequency	60Hz ± 3Hz or 50Hz ± 3Hz										
OUTPUT											
Voltage	28VDC ± 10% Adjustable (25.2VDC ~ 30.8VDC)										
Rate Current	0~50A		0~100A		0~200A		0~300A		0~400A		
Overload Capacity	None	150A	None	300A	None	600A	None	900A	None	1200A	
Current-limiting adjustable	2~50A	7~150A	5~100A	15~300A	10~200A	30~600A	15~300A	45~900A	20~400A	60~1200A	
Line Regulation	≤ 0.5%										
Load Regulation	≤ 0.5%										
Ripple(Vrms)	≤ 1%										
INDICATOR											
Digital Voltmeter	28.0 V										
Digital Ammeter	50.0 A	150.0 A	100.0 A	300.0 A	200.0 A	600.0 A	300.0 A	900.0 A	400.0 A	1200.0 A	
Protection	Over-Voltage; Over-Current; Over-temperature; Short-circuit protection										
Cooling System	Air Forced Fan										
Environment	-20℃ ~ +45 / 500meter(Altitude) / Prevent against dust and dust from carbon bush										
Humidity	0~90% (Non-condensing) Continuous working										
Resistance	≥ 10MΩ (500Vdc)										
Withstand voltage	1500Vac 10mA/1min										
Noise	< 65dB										
Remote Monitoring	Adjust output voltage range from 0~100% via 0~5Vdc external control. (option)										
DIMENSION											
Trailer	H x W x D (mm/ inch)	880 x 1198 x 760 / 34.64 x 47.16 x 29.92									
Stand-Alone	H x W x D (mm/ inch)	1605 x 750 x 835 / 63.18 x 29.52 x 32.87									
WEIGHT											
Trailer	(lbs / kg)	507/230	660/300	570/260	728/330	660/300	815/370	728/330	882/400	794/360	948/430
Stand-Alone	(lbs / kg)	330/150	400/180	375/170	441/200	441/200	530/240	507/230	661/300	595/270	728/330

*1 Other required voltage, please kindly refer to Form 1.

*No compensating function.

*Custom-made specifications are on request.

*Outlook: F-Free standing type, T-Trailer type, B-Bridge mounted type, W-Wall mounted type.

*One year warranty;

*All specifications are subject to change without prior notice.

SPECIFICATIONS

ADS Series (15 kW - 45 kW)

Model		ADS-28-500		ADS-28-600		ADS-28-800		ADS-28-1000		ADS-28-1500	
Capacity		15kVA	45kVA	18kVA	54kVA	24kVA	72kVA	30kVA	90kVA	45kVA	135kVA
Circuit Type		SCR									
INPUT											
Phase		3 Phase 3W+G (Δ) 3 Phase 4W+G (Y)									
Voltage		220V/380V ^①									
Voltage Range		±10%									
Frequency		60Hz ± 3Hz or 50Hz ± 3Hz									
OUTPUT											
Voltage		28VDC ± 10% Adjustable (25.2VDC ~ 30.8VDC)									
Rate Current		0~500A		0~600A		0~800A		0~1000A		0~1500A	
Overload Capacity		None	1500A	None	1800A	None	2400A	None	3000A	None	4500A
Current-limiting adjustable		25~500A	75~1500A	30~600A	90~1800A	40~800A	120~2400A	50~1000A	150~3000A	75~1500A	225~4500A
Line Regulation		≤ 0.5%									
Load Regulation		≤ 0.5%									
Ripple(Vrms)		≤ 1%									
INDICATOR											
Digital Voltmeter		28.0 V									
Digital Ammeter		500.0 A	1500.0 A	600.0 A	1800.0 A	800.0 A	2400 A	1000.0 A	3000 A	1500.0 A	4500 A
Protection		Over-Voltage; Over-Current; Over-temperature; Short-circuit protection									
Cooling System		Air Forced Fan									
Environment		-20℃ ~ +45 / 500meter(Altitude) / Prevent against dust and dust from carbon bush									
Humidity		0~90% (Non-condensing) Continuous working									
Resistance		≥ 10MΩ (500Vdc)									
Withstand voltage		1500Vac 10mA/1min									
Noise		< 65dB									
Remote Monitoring		Adjust output voltage range from 0~100% via 0~5Vdc external control. (option)									
DIMENSION											
Trailer	H x W x D (mm / inch)	970 x 1355 x 930 / 38.18 x 53.34 x 36.61								-	
Stand-Alone	H x W x D (mm / inch)	1355 x 600 x 980 / 53.34 x 23.62 x 38.58						2060 x 1180 x 1060 / 81.1 x 46.45 x 41.73			
WEIGHT											
Trailer	(lbs / kg)	882/400	1036/470	926/420	1080/490	992/450	1168/530	1080/490	1280/580	1213/550	1433/650
Stand-Alone	(lbs / kg)	640/290	772/350	728/330	838/380	816/370	1058/480	992/450	1102/500	1124/510	1390/630

*1 Other required voltage, please kindly refer to Form 1.

*No compensating function.

*Custom-made specifications are on request.

*Outlook: F-Free standing type, T-Trailer type, B-Bridge mounted type, W-Wall mounted type.

*One year warranty;

*All specifications are subject to change without prior notice.

AC POWER CORP.

Specialized in power electronics, Preen (AC Power Corp.) has been developing products based on its core technology of Power Conversion. Product Line includes AC Power Sources, DC Power Supplies, Power Supplies for Defense Industry, Renewable Energy Simulators, Line Conditioners and UPS. Boasting one of the broadest product line in the industries, Preen specializes in High Power Source and has developed AC power source up to 2MVA with high power density.

Product Lines

AC
Power Source

- Up to 1000Hz
- 500VA~2,000kVA
- Regenerative Function

DC
Power Supply

- Up to 2,000V
- 2kW ~ 300kW
- Fast Response & Low Ripple

Power Conditioner
&
UPS

- Solid State & Inductive types
- Up to 1500kVA

Applications



Renewable Energy



Laboratory



Aircraft Manufacturing



Transport System



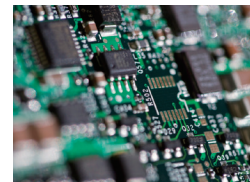
EMC Chamber



Medical Equipment



Control Room/ Data Center



Electronics



ATE System



Airport Apron / Hangar



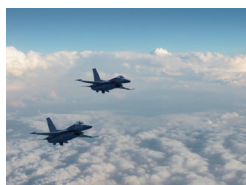
Home Appliance



Motor / Engine



Communication Equipment



Military aircraft / Helicopter



Navy System



Defense Equipment

Preen[®]

Distributed by:
Reliant EMC LLC
3311 Lewis Ave
Signal Hill CA 90755
408-916-5750, www.reliantemc.com

