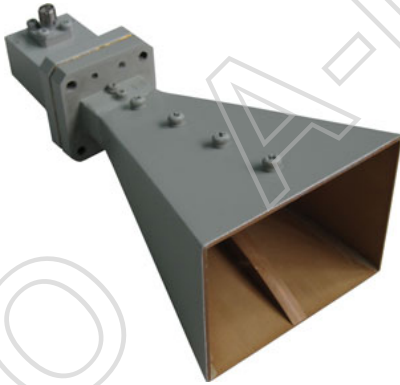
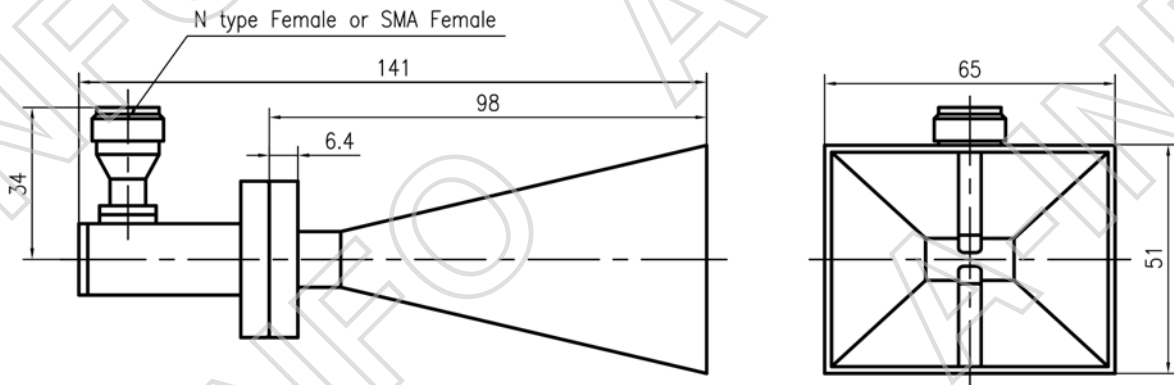


Technical Specification



Frequency Range (GHz)	5.8 - 16.0
Gain(dB)	10 Typ.
Polarization	Linear
VSWR	2.0 Max
Cross Polarization Isolation(dB)	-20 Typ.
Waveguide(A Type)	WRD580D28
Adapter(C Type)	580DRWCAS or 580DRWCAN
Connector(C Type)	SMA-F or N-F
Size(mm)	65x51x141 (Including Adapter)
Net Weight(Kg)	0.3 Around (Including Adapter)

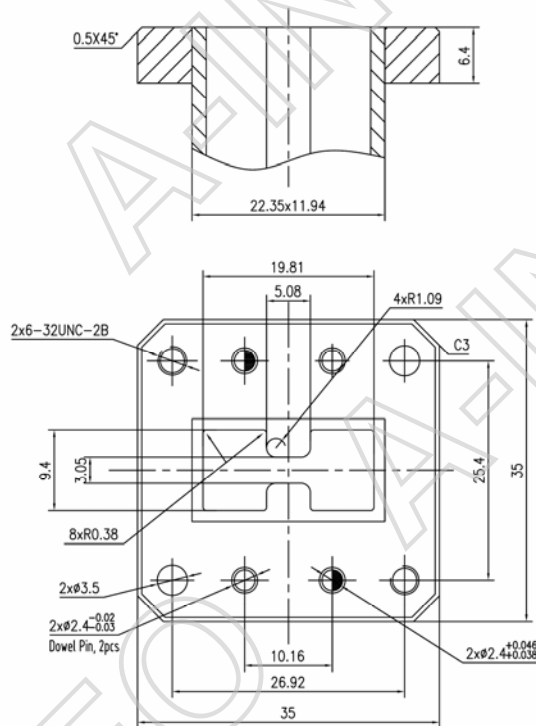
Outline Drawing (Size: mm) Including Adapter



Flange Drawing (Size: mm)

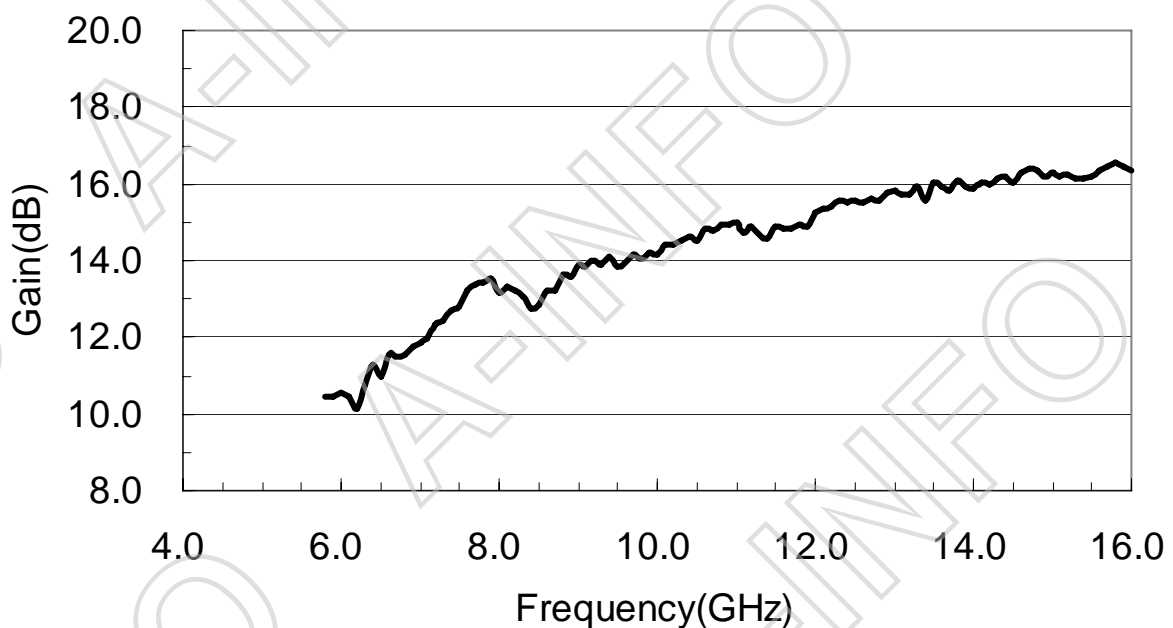
FPWRD580D28

(With two through mounting holes and two screws holes)

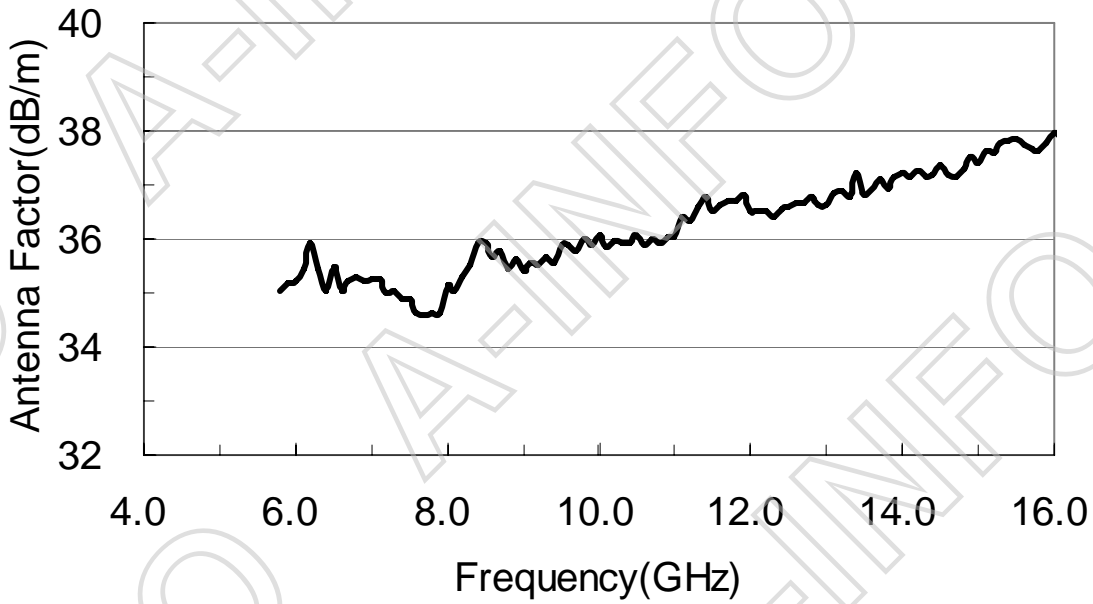


Test Results

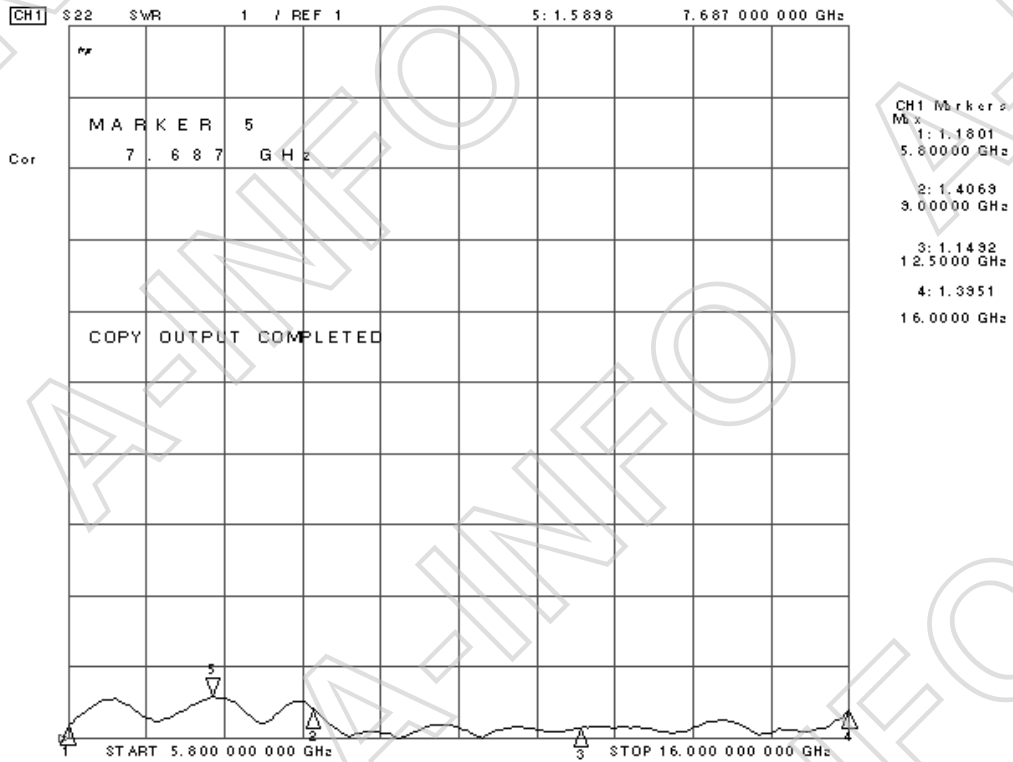
1. Gain



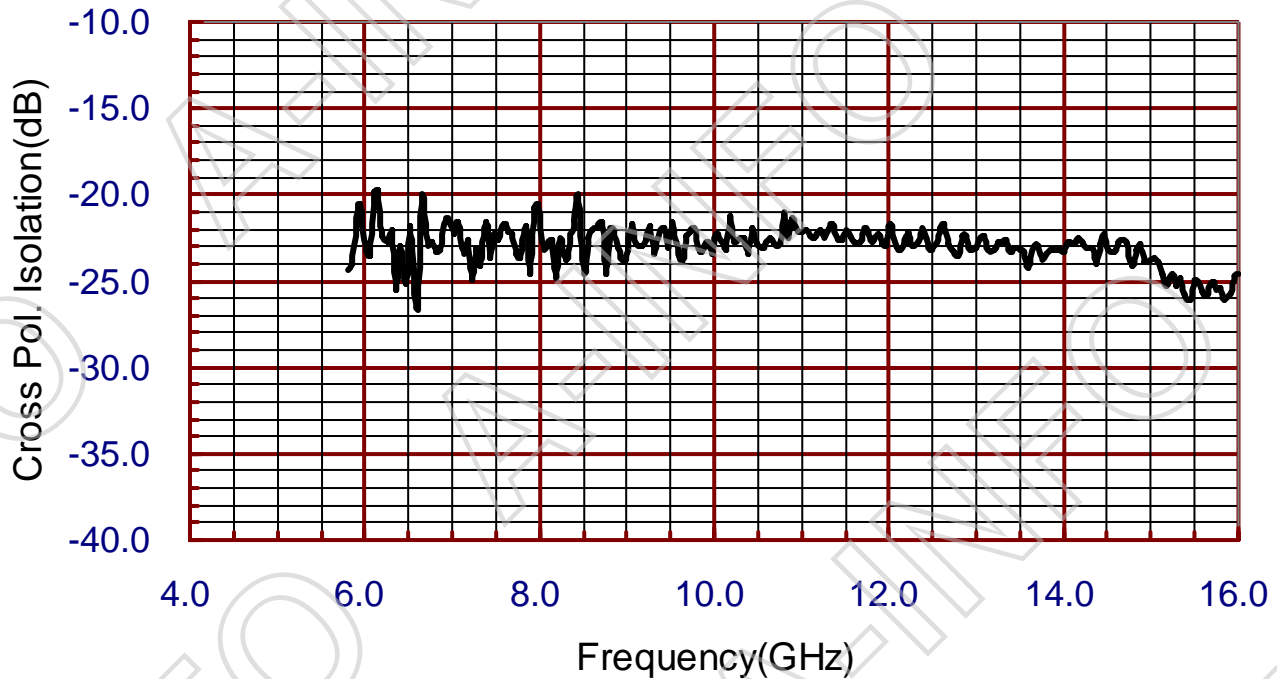
2. Antenna Factor



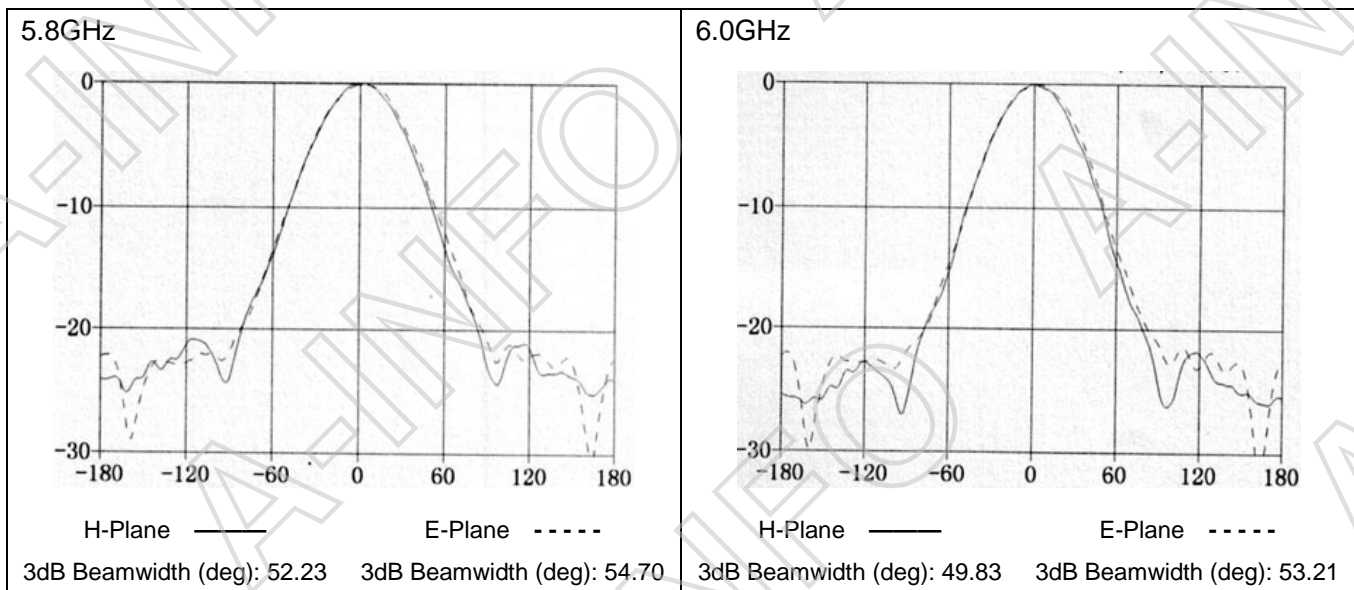
3. VSWR



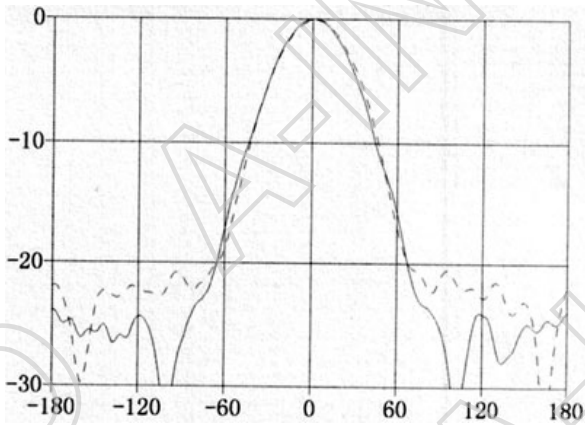
4. Cross Polarization Isolation



5. Pattern

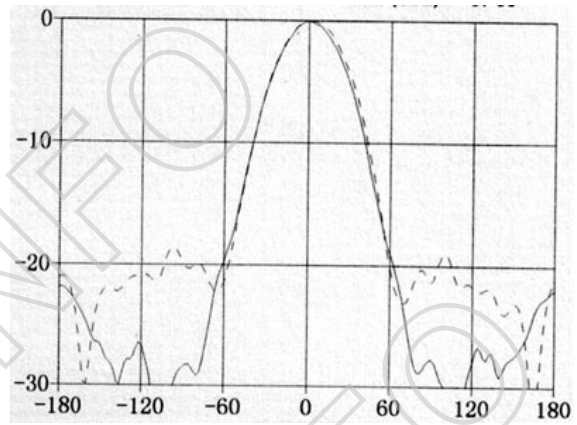


6.5GHz



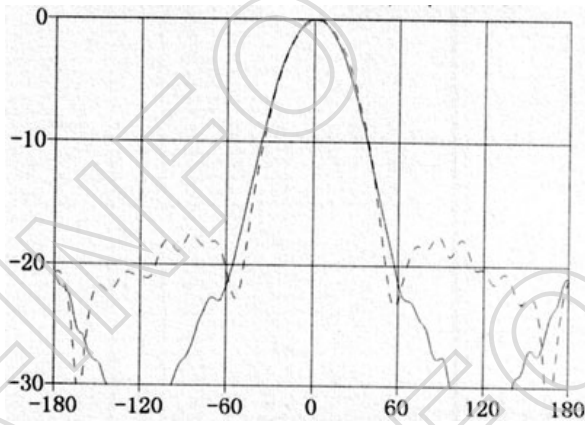
H-Plane ——— E-Plane - - - - -
3dB Beamwidth (deg): 47.56 3dB Beamwidth (deg): 48.83

7.0GHz



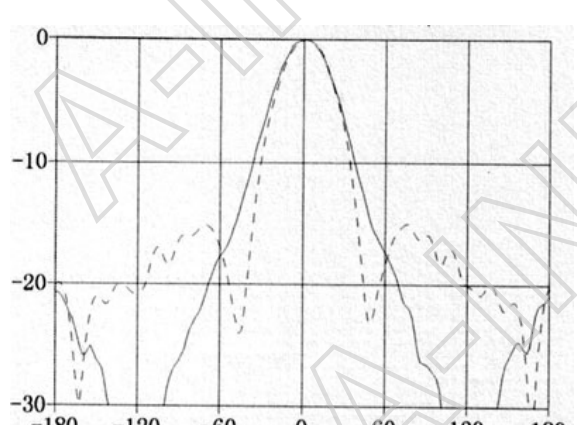
H-Plane ——— E-Plane - - - - -
3dB Beamwidth (deg): 43.89 3dB Beamwidth (deg): 46.30

7.5GHz



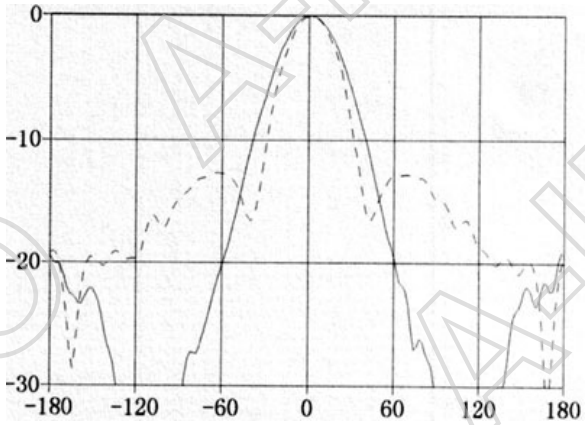
H-Plane ——— E-Plane - - - - -
3dB Beamwidth (deg): 39.77 3dB Beamwidth (deg): 41.01

8.0GHz



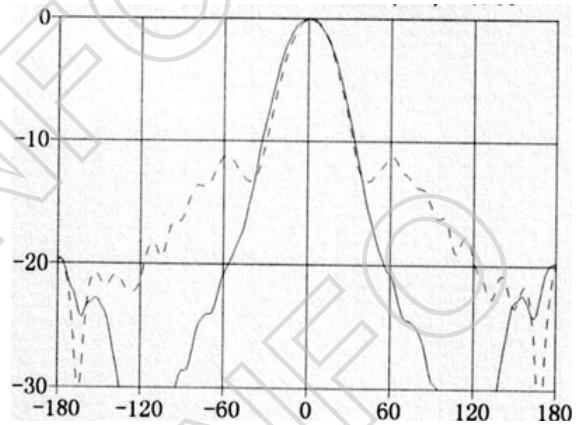
H-Plane ——— E-Plane - - - - -
3dB Beamwidth (deg): 38.03 3dB Beamwidth (deg): 36.26

8.5GHz



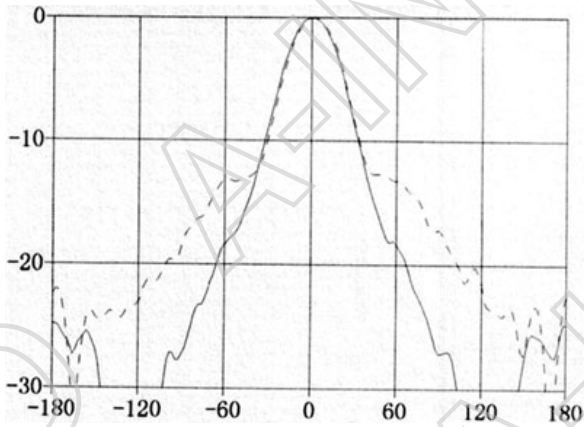
H-Plane ——— E-Plane - - - - -
3dB Beamwidth (deg): 41.25 3dB Beamwidth (deg): 35.09

9.0GHz



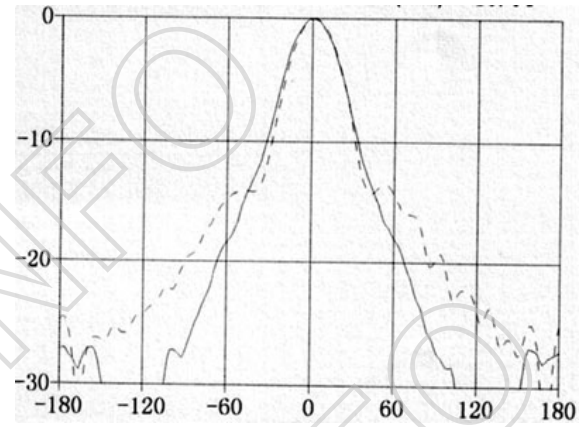
H-Plane ——— E-Plane - - - - -
3dB Beamwidth (deg): 36.98 3dB Beamwidth (deg): 33.59

9.5GHz



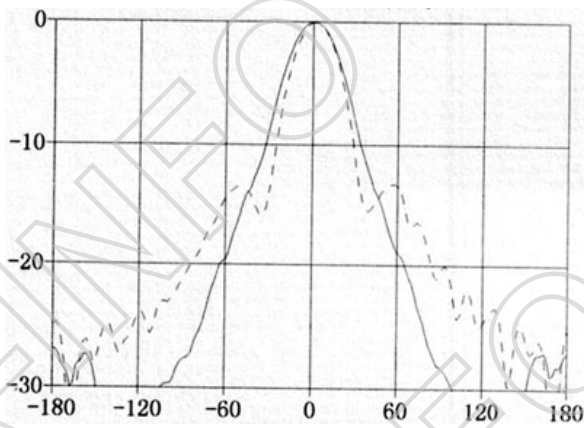
H-Plane ——— E-Plane - - - - -
3dB Beamwidth (deg): 34.33 3dB Beamwidth (deg): 34.27

10.0GHz



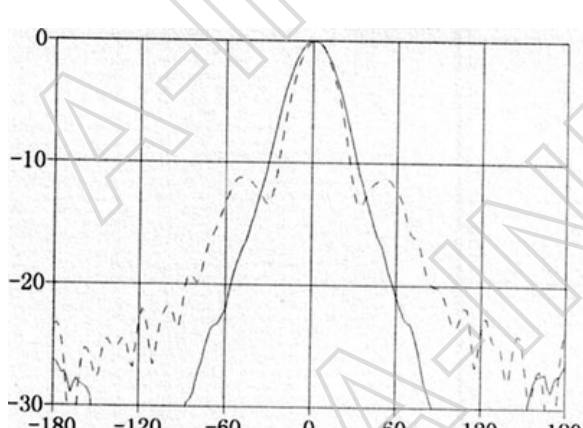
H-Plane ——— E-Plane - - - - -
3dB Beamwidth (deg): 33.71 3dB Beamwidth (deg): 32.65

10.5GHz



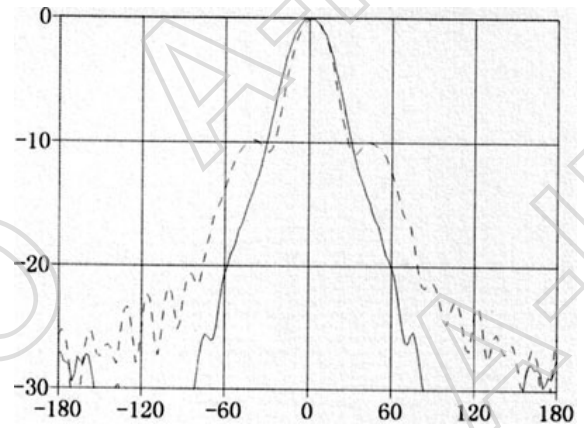
H-Plane ——— E-Plane - - - - -
3dB Beamwidth (deg): 34.77 3dB Beamwidth (deg): 30.67

11.0GHz



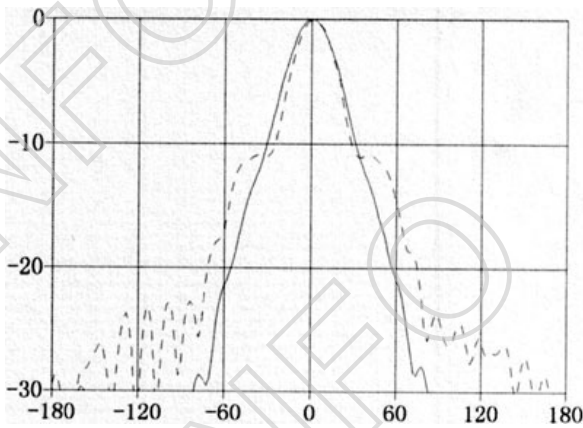
H-Plane ——— E-Plane - - - - -
3dB Beamwidth (deg): 32.32 3dB Beamwidth (deg): 27.48

11.5GHz



H-Plane ——— E-Plane - - - - -
3dB Beamwidth (deg): 32.08 3dB Beamwidth (deg): 27.67

12.0GHz



H-Plane ——— E-Plane - - - - -
3dB Beamwidth (deg): 30.74 3dB Beamwidth (deg): 27.34

