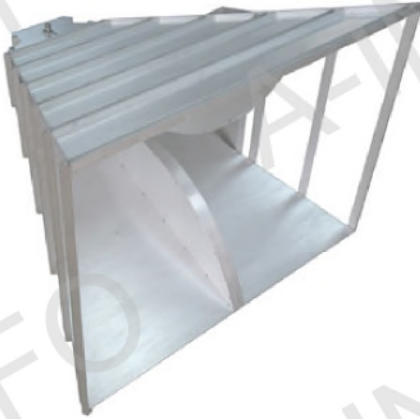


Technical Specification



Frequency Range(GHz)	0.2 - 2.5
Gain(dB)	12 Typ.
Polarization	Linear
VSWR	2.0:1 Typ.
Connector	N-Female
Power Handling(W)	800 Max. CW
Size(mm)	967 x 730 x 903
Antenna Weight	14.14 Kg (16.34Kg Including Hand Holder)

Outline Drawing (Size: mm)

N Type Female Output

