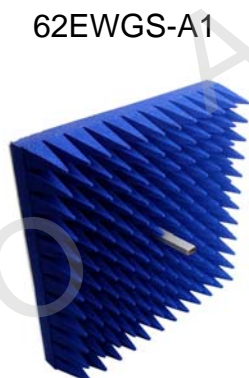


Technical Specification



62EWGS



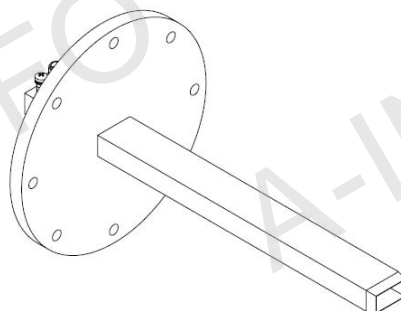
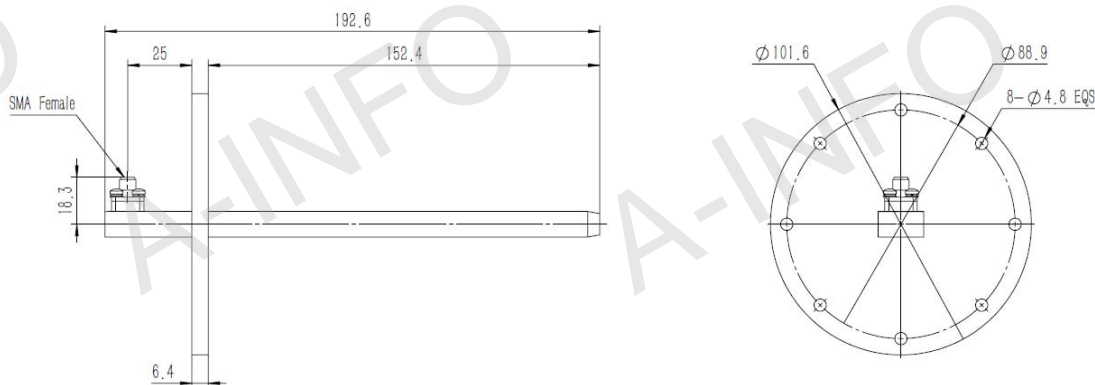
62EWGS-A1

Frequency Range(GHz)	12.4 - 18.0
Waveguide	WR62
Gain(dBi)	5 Typ.
Polarization	Linear
3dB Beamwidth(deg)	E Plane: 107 Typ.
	H Plane: 59 Typ.
Cross Pol. Isolation(dB)	30 Typ.
VSWR	2.0:1 Typ.
Output	SMA-Female
	or N-Female
	or TNC-Female
	or 7mm or 3.5mm-Female
Material	Al
Size(mm)	62EWGx: 101.6 x 101.6 x 192.6
	62EWGx-A1: 399.6 x 399.6 x 192.6
Net Weight(Kg)	62EWGx: 0.20 Around
	62EWGx-A1: 2.45 Around

Outline Drawing (Size: mm)

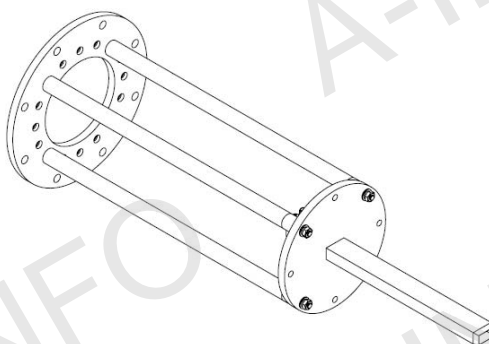
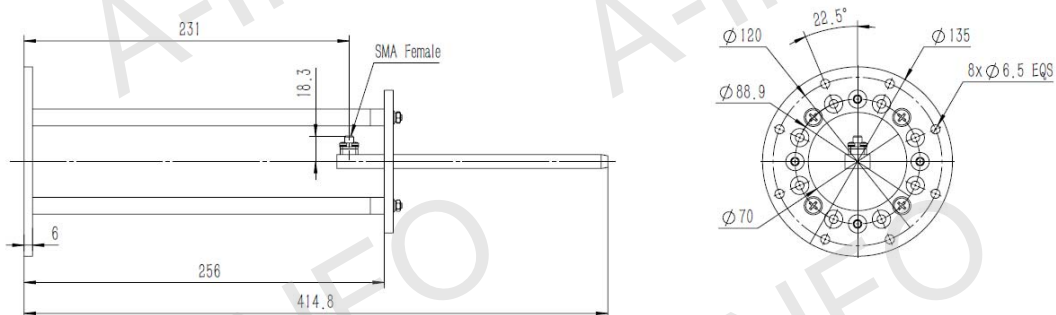
62EWGS (With SMA-Female Output)

For N-Female, TNC-Female, 7mm or 3.5mm-Female output outline drawing, please contact A-INFO.



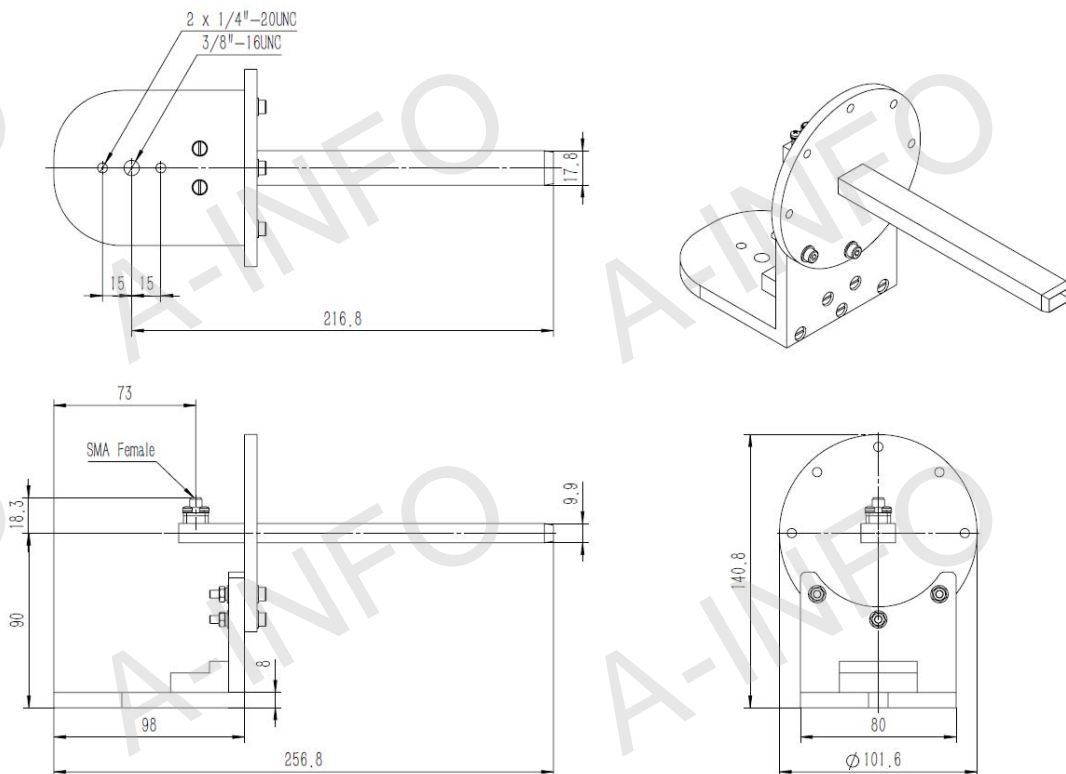
62EWGS (With SMA-Female Output & Round Mounting Bracket)

For N-Female, TNC-Female, 7mm or 3.5mm-Female output outline drawing, please contact A-INFO.



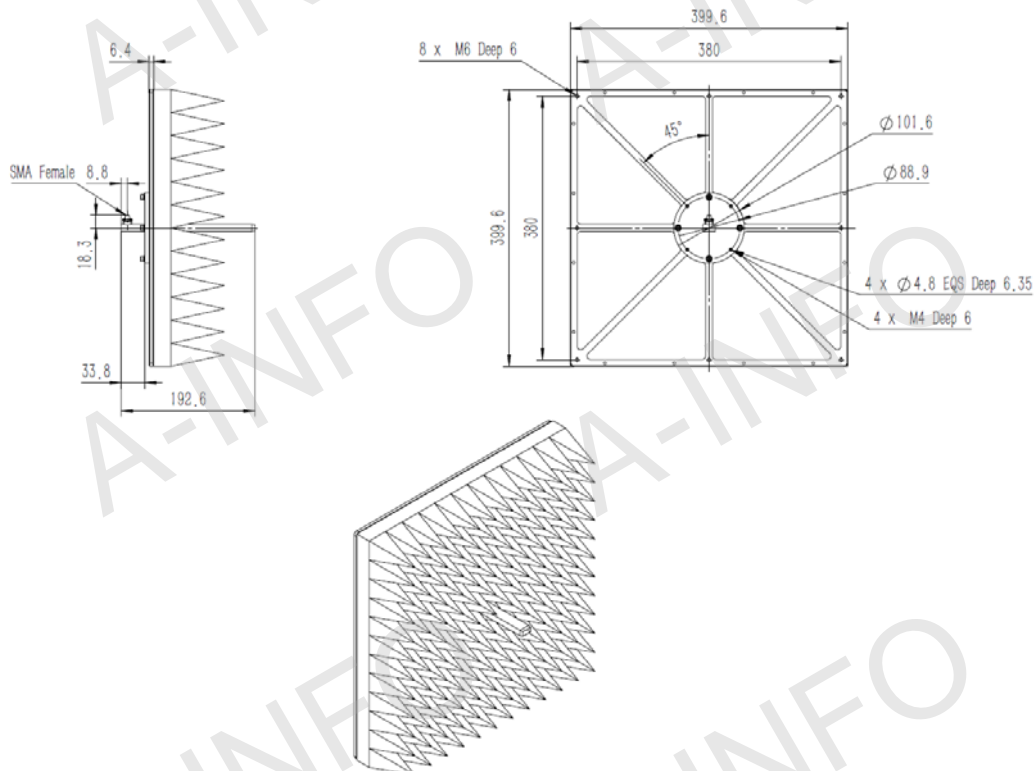
62EWGS (With SMA-Female Output & L Type Mounting Bracket)

For N-Female, TNC-Female, 7mm or 3.5mm-Female output outline drawing, please contact A-INFO.



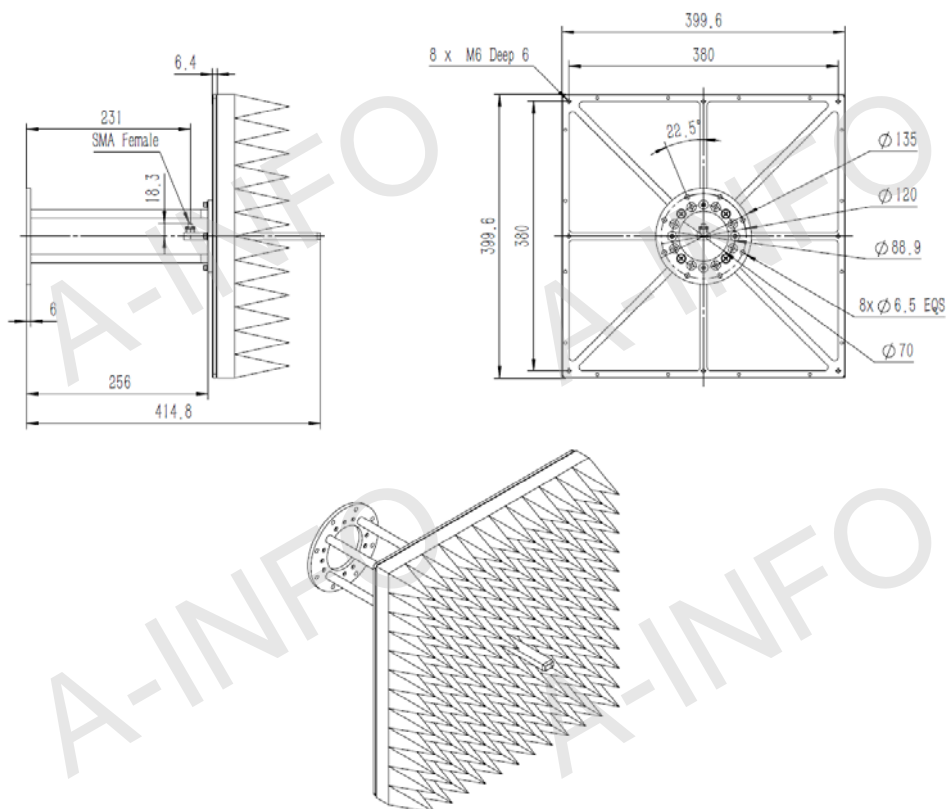
62EWGS-A1 (With SMA-Female Output, Equipped with Absorber)

For N-Female, TNC-Female, 7mm or 3.5mm-Female output outline drawing, please contact A-INFO.



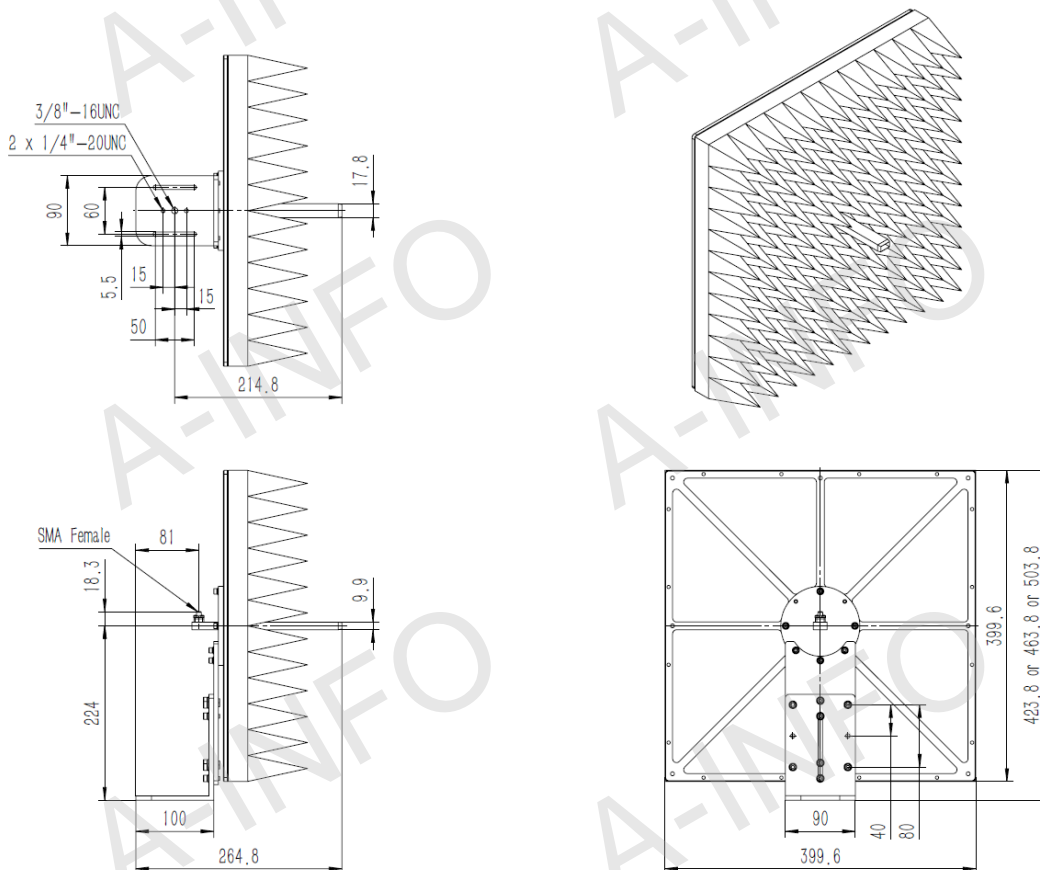
62EWGS-A1 (With SMA-Female Output & Round Mounting Bracket, Equipped with Absorber)

For N-Female, TNC-Female, 7mm or 3.5mm-Female output outline drawing, please contact A-INFO.



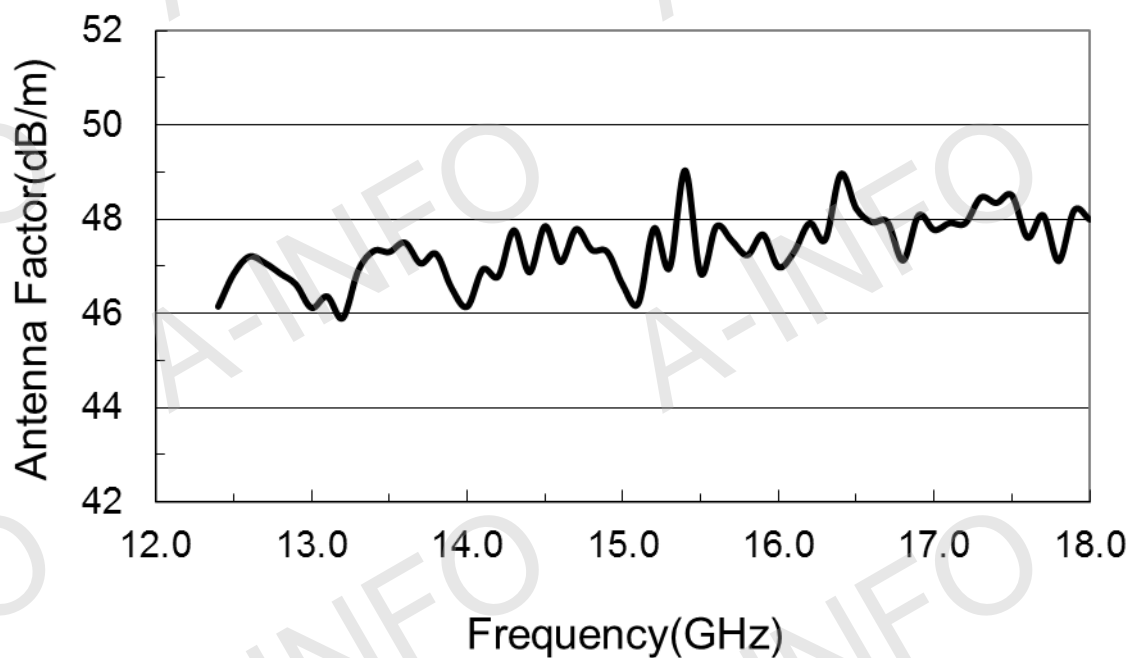
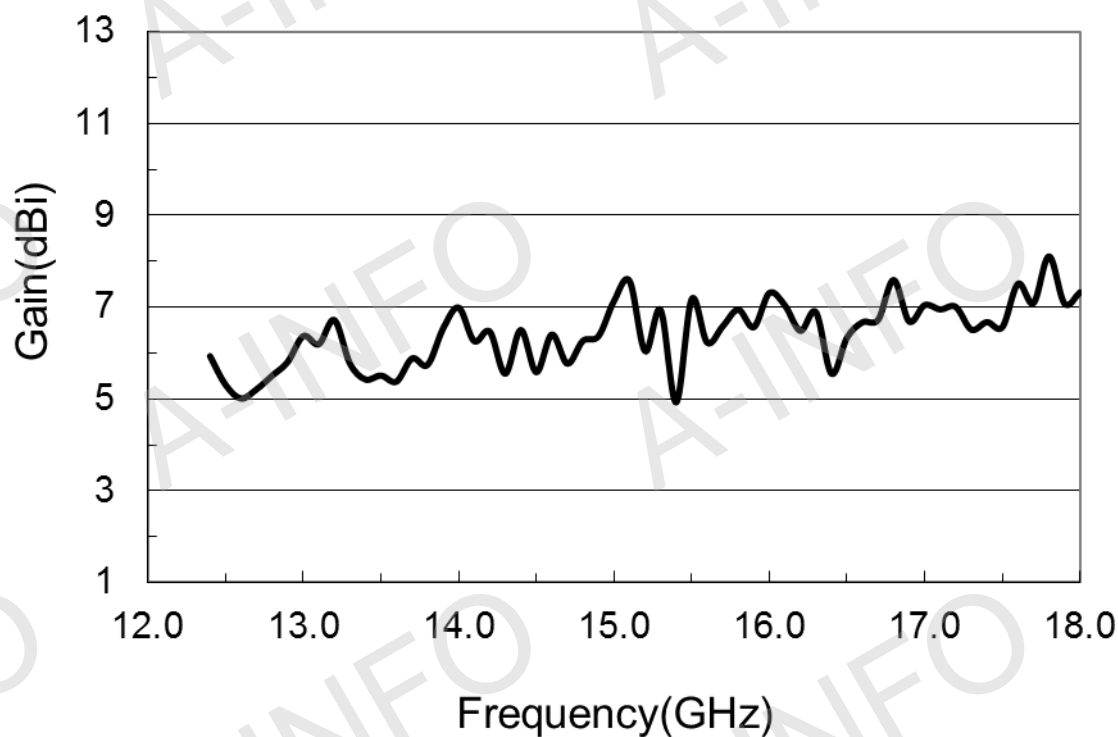
62EWGS-A1 (With SMA-Female Output & L Type Mounting Bracket, Equipped with Absorber)

For N-Female, TNC-Female, 7mm or 3.5mm-Female output outline drawing, please contact A-INFO.

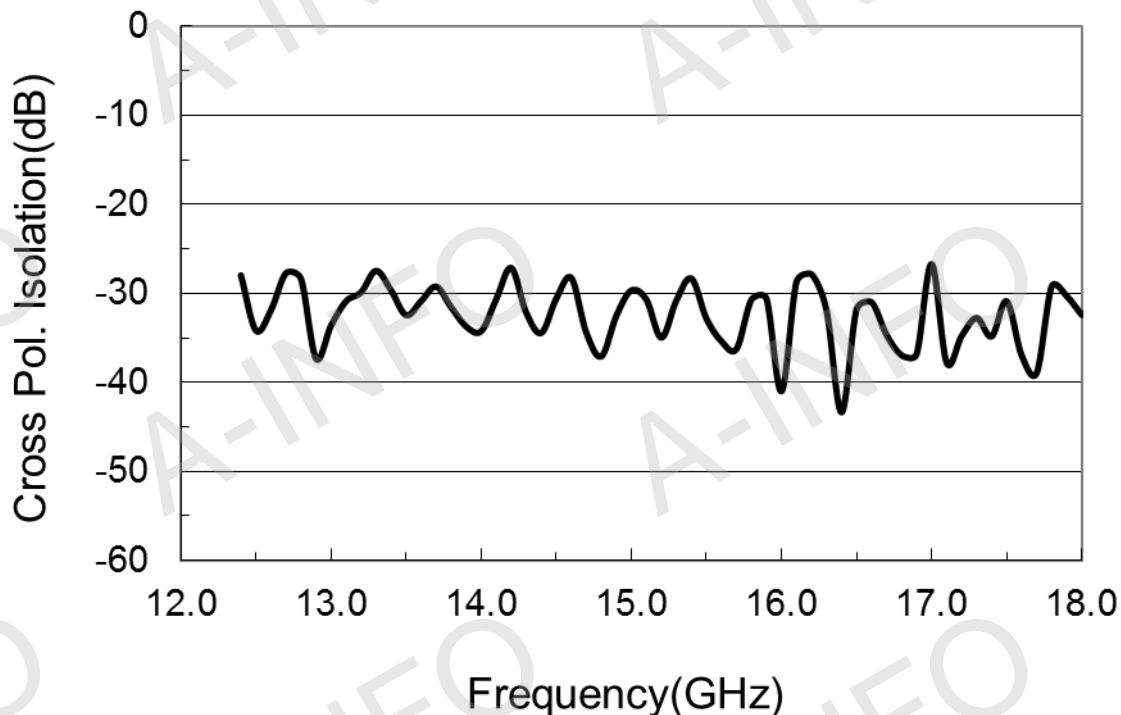


Test Results

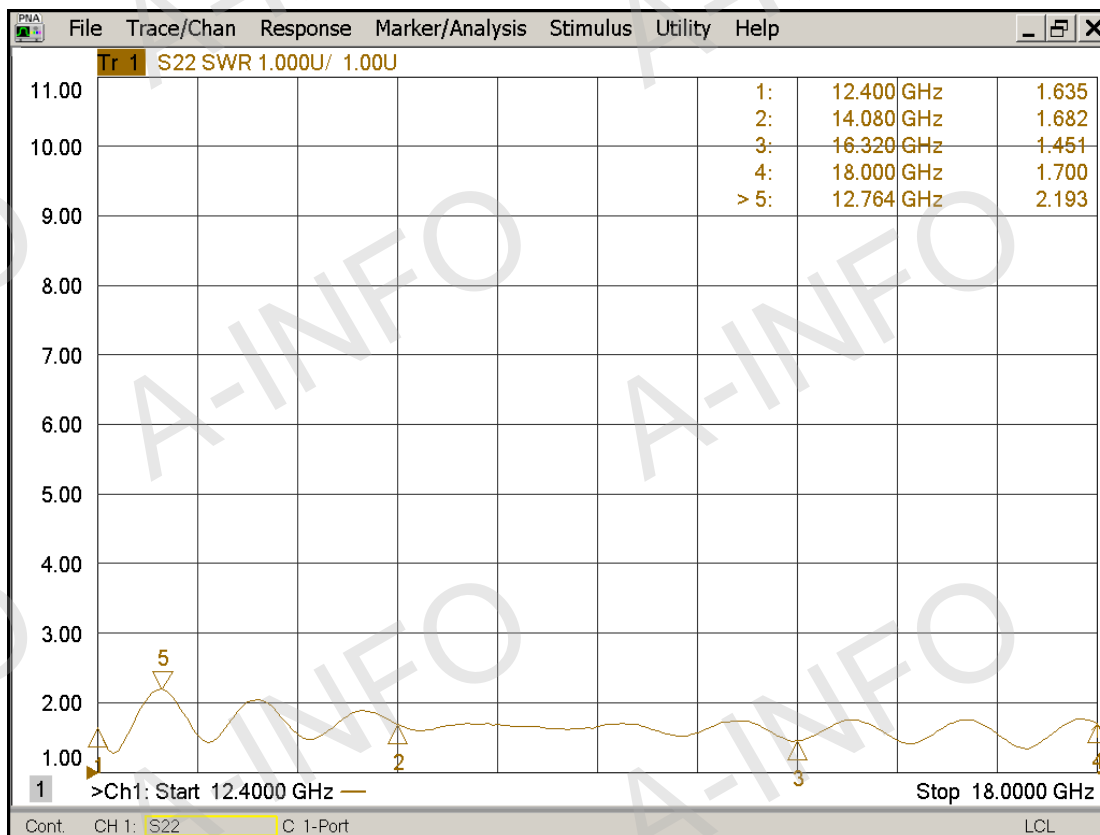
1. Gain & Antenna Factor



2. Cross Polarization Isolation



3. VSWR



4. Pattern

