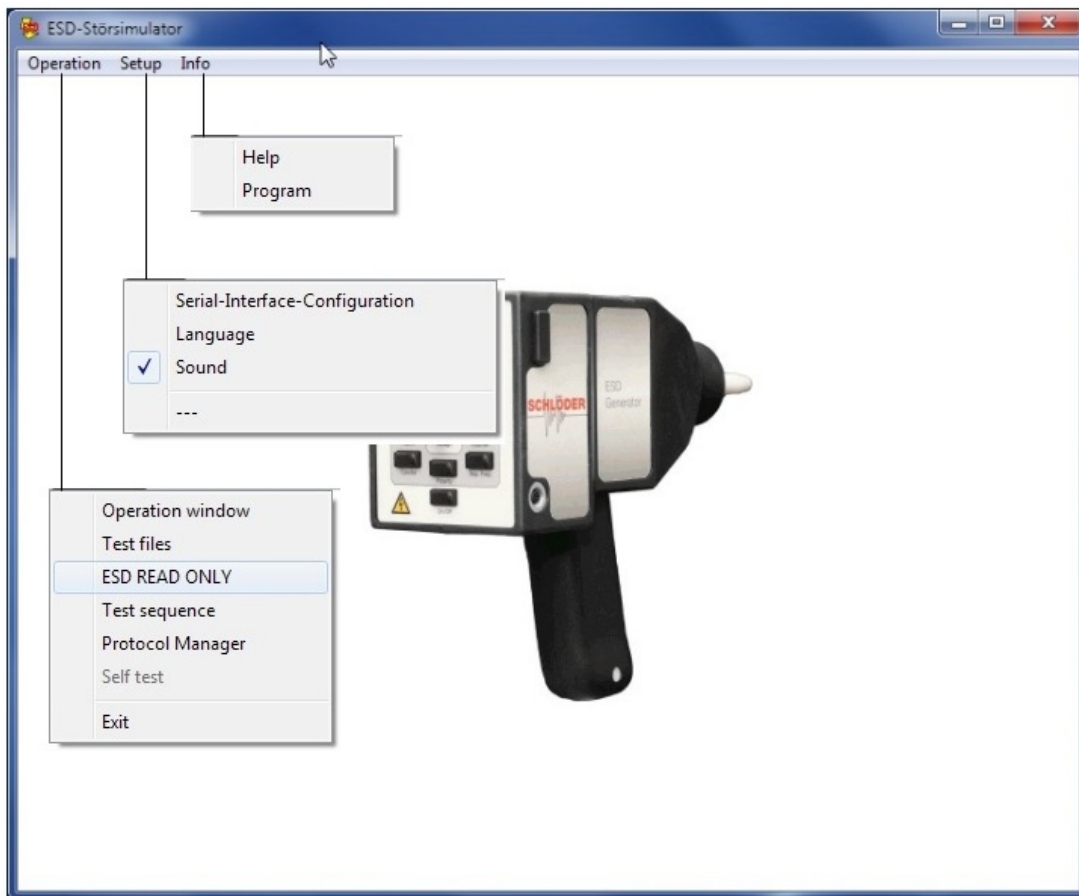


ESD-Soft 6



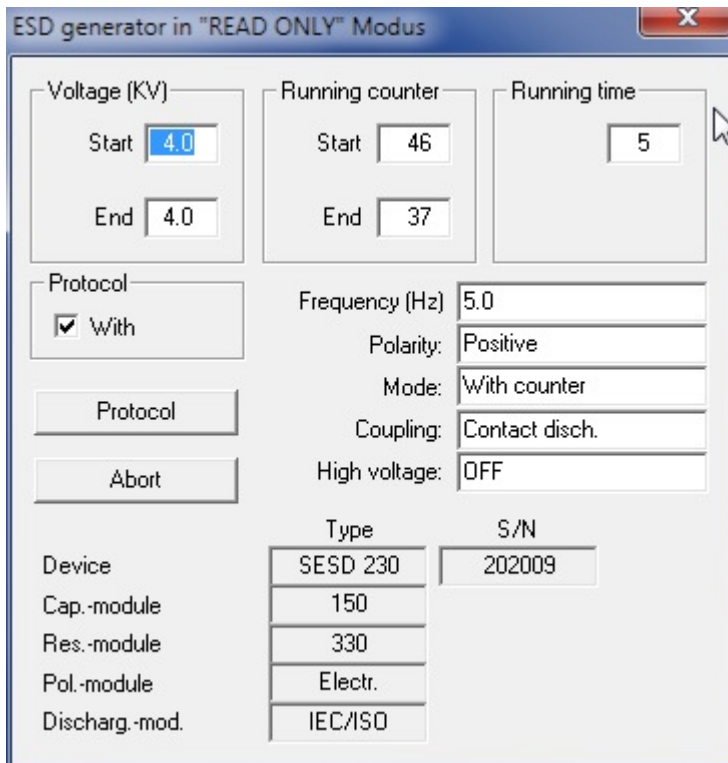
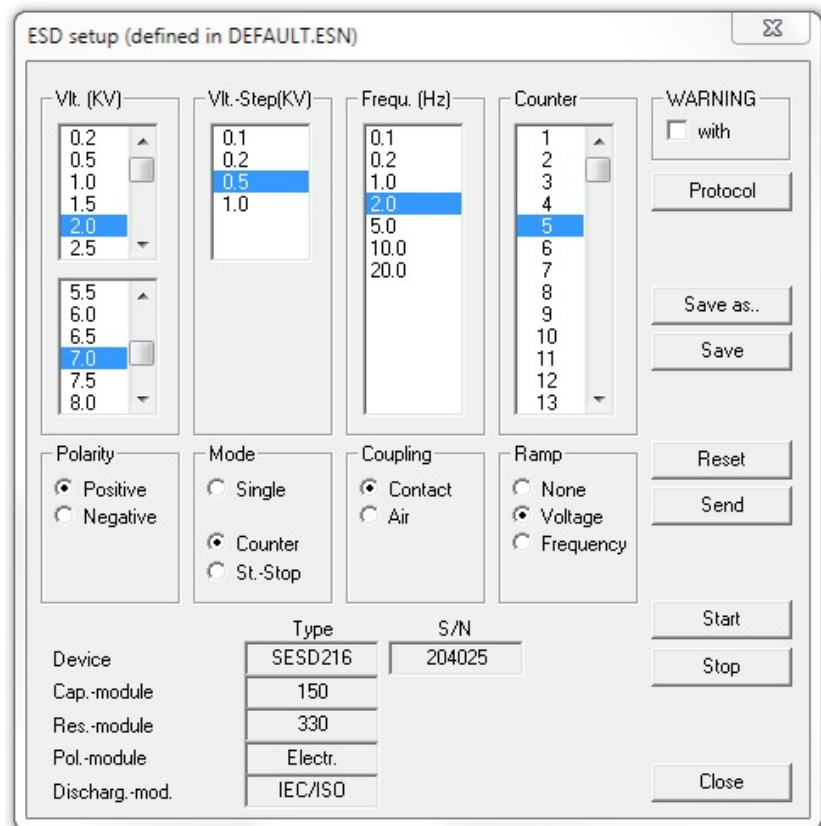
Control software for the ESD generator SESD 30000; SESD 230 and SESD 216

running under Win98, 2000, XP , Win7

Description

The Microsoft-Windows based software controls the ESD generator via a serial interface. All parameters that you can adjust directly at the test generators can be handled also with the software. Additionally you have the possibility to create ramp functions and unit-specific test functions. With the sequential test editor you can add several single programs to one multi test file to create complex test programs. Also you can "READ ONLY" the ESD gun for record your handling with the ESD generator.

In this window you find the setup for all parameters that are transferred to the test generator. All values can be chosen easily with the mouse. It is checked automatically if the values are within the allowed maximum parameters of the test generator



The function READ ONLY allows a notification of the manual operation with the ESD generator.