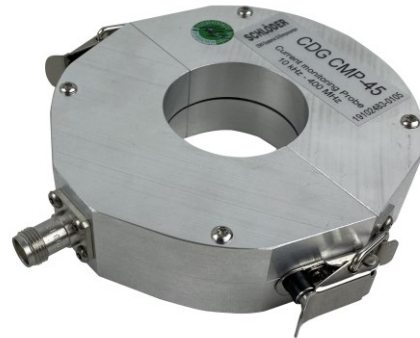


# CDG CMP-45

## Current monitoring probe

ISO / EN 61000-4-6, ISO 11452-4,  
MIL-STD 461, RTCA/DO-160 a. o.

- For BCI tests according to ISO 11452-4 and others
- Frequency range 10 kHz - 400 MHz
- Cable diameter < 45 mm
- **Foldable**, easy positioning on the conductor/cable
- Insertion impedance < 2,5  $\Omega$



**Foldable, thus easy handling  
for connected cables.**



### Overview

CMP-45 can be used as a current monitor for BCI tests (ISO 11452-4, MIL-STD 461, DO-160 and others as well as IEC / EN 61000-4-6.

Current monitoring probes can be used whenever RF current measurements are required. The current carrying conductor can be easily positioned in the central opening of the CDG CMP-45 by opening its foldable "door". Calibration of the probe allows the measured voltages to be converted to current over the frequency range shown in the individual transfer impedance curve supplied with each probe.

The setup is practically not loaded, so that normal operation of the device under test (DUT) is possible during the measurements.

The current monitoring probe CDG CMP-45 measures RF common mode currents (asymmetric currents) on single conductors or conductor bundles. Transducer factors for different low frequency currents are given to estimate the saturation effects.

Current measurements are made by placing the current carrying conductor in the central opening of the probe and measuring the output voltage with an RF voltmeter, which can be converted to the value of the equivalent current.

### Key facts

- **NEW: with TNC connection**
- Setup is not loaded
- Normal operation of the measuring object possible during measurement



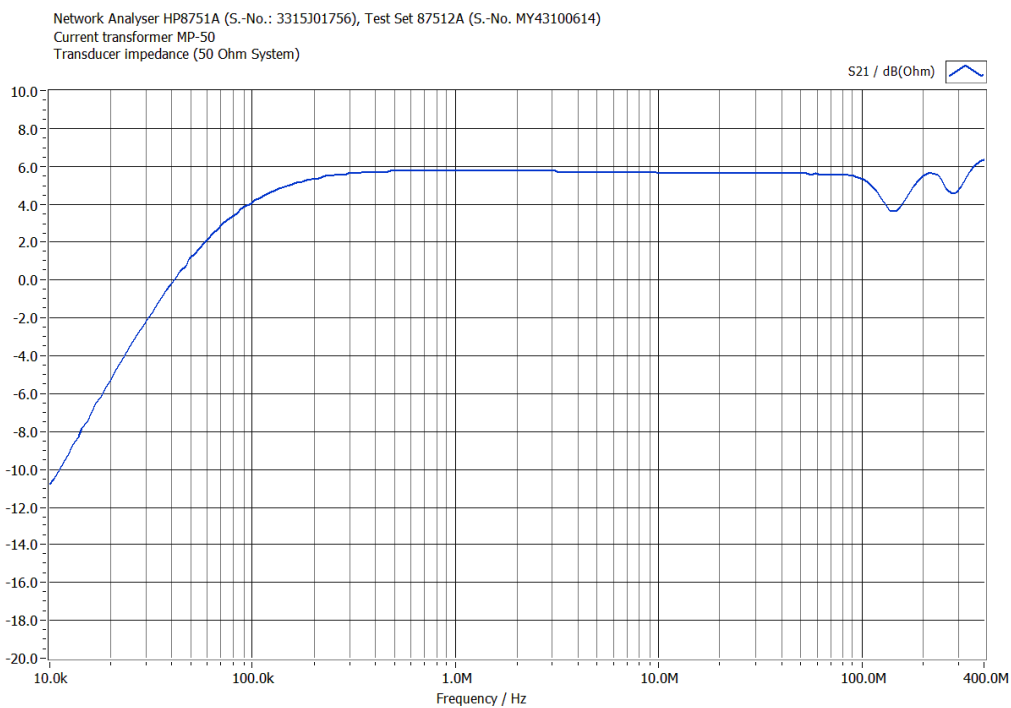
# CDG CMP-45

## Current monitoring probe

### Technical data I

CDG CMP-45			
Frequency range	10 kHz - 400 MHz	Thickness	30 mm
Insertion impedance	< 2,5 Ω	Weight	approx. 0,6 kg
Max. signal current	1 A		
Signal output	TNC socket		
External diameter	116 mm		
Internal diameter	45 mm		

### Technical data II: Typical transducer impedance



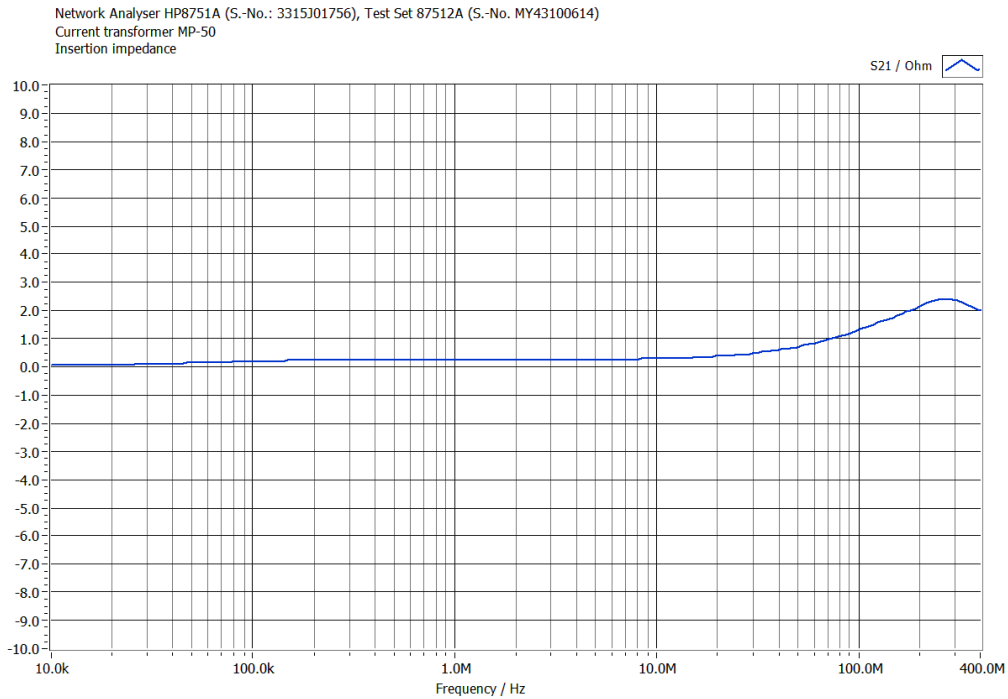
$$\text{Current (dB}\mu\text{A)} = \text{Voltage (dB}\mu\text{V)} / \text{Receiver-Impedance (dB}\Omega\text{)}$$



# CDG CMP-45

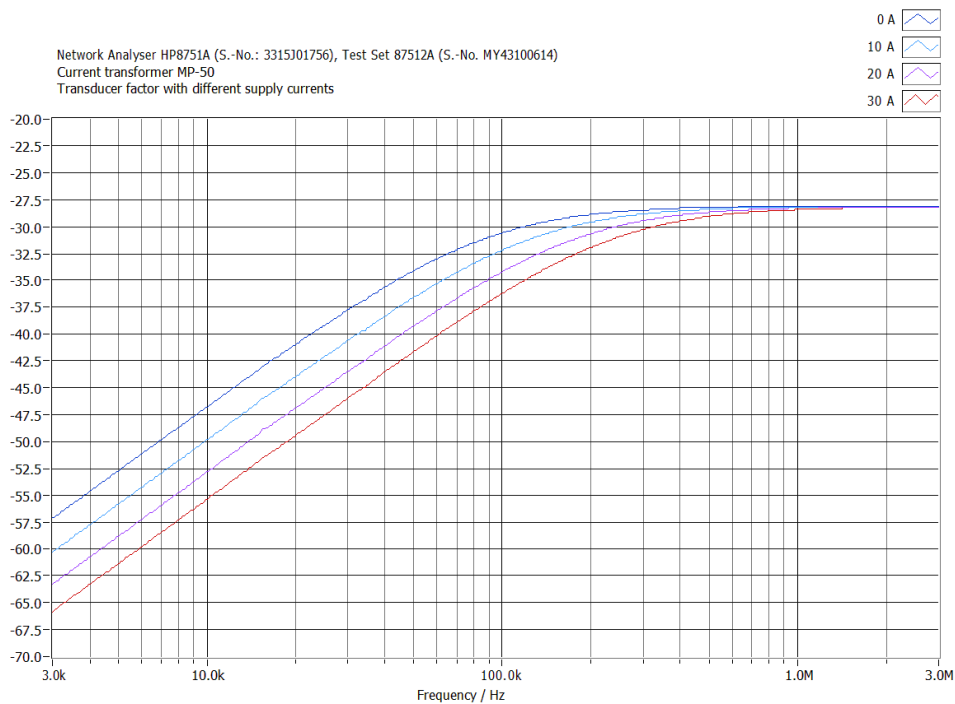
## Current monitoring probe

### Technical data III: Typical insertion impedance



### Technical data IV: Transducer factor with different supply currents

(to estimate the saturation effects at different currents with low frequencies)



## CDG CMP-45

### Current monitoring probe

#### Options

- CDG A CMP-45: Calibration jig  
The CDG A CMP-45 can be used as a calibration jig for the current monitoring probe CDG CMP-45 as an additional kit.
- Connections: N sockets on both sides
- With practical tension locks to open the lid



#### Scope of delivery

Cable, TNC – TNC connections , 1,5 m length

All information regarding appearance and technical data correspond to the current state of development at the time of release of this data sheet. We reserve the right to make technical changes. 172105

