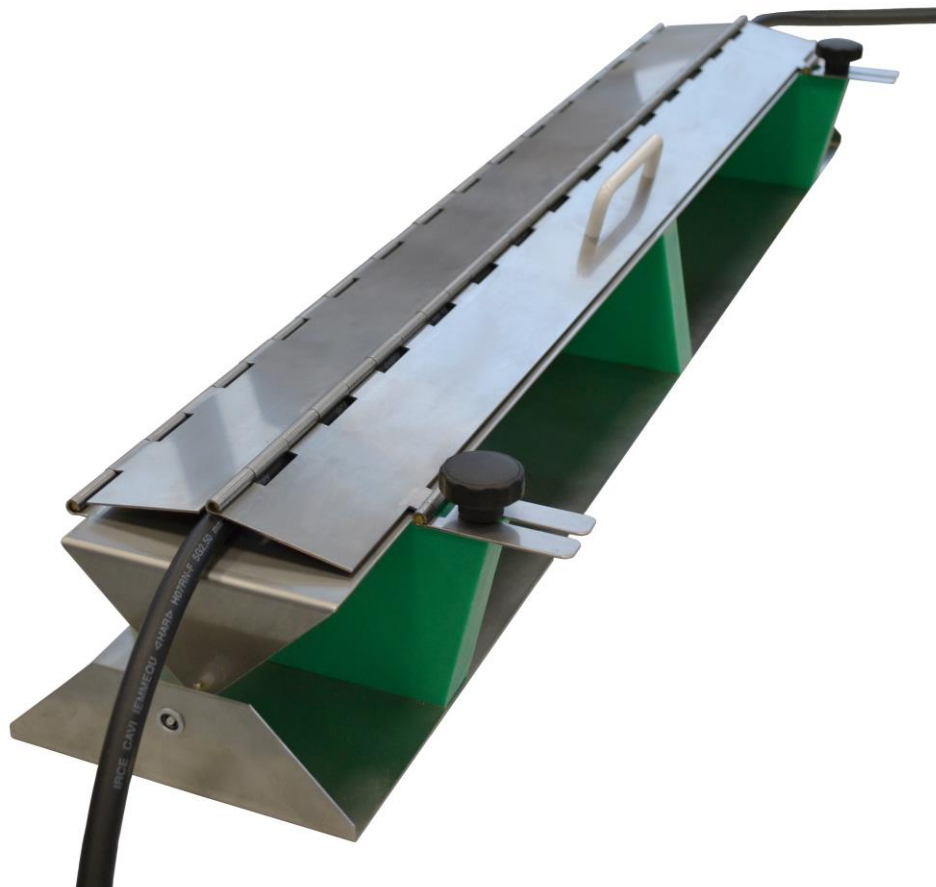


# Capacitive Coupling Clamp

## for Burst / EFTG impulses

### EFTC 2012



The Capacitive Coupling Clamp, EFTC 2012, provides the ability to couple Burst / EFT pulses to data lines. It can also be used for coupling to main lines where no CDN is available, for example high current lines >200 A.

The mechanical characteristics of the EFT-Clamp are identical to those of the clamp proposed by :

- IEC 61000-4-4 : 2012 Ed 3.0
- IEC 61000-4-4 : 2004 Ed 2.0
- Calibrated with calibration kit acc. to IEC 61000-4-4 : 2012 Ed 3.0

Dimensions: W * H * L	140 * 180 *1100 mm <sup>3</sup>
Incl. coaxial connection cable, Fischer Coax	ca. 1 m long
Max. cable diameter	ca. 42 mm